

**Self-reported ~~cleaning and pesticide product use~~chemicals  
exposure, beliefs about disease causation, and risk of breast  
cancer in the Cape Cod Breast Cancer and Environment Study: a  
case-control study**

Ami R. Zota,<sup>1</sup> Ann Aschengrau,<sup>2</sup> Ruthann A. Rudel,<sup>1</sup> Julia Green Brody<sup>1\*</sup>

<sup>1</sup>Silent Spring Institute, 29 Crafts Street, Newton, MA 02458

<sup>2</sup>Department of Epidemiology, Boston University School of Public Health, Talbot 3E, 715 Albany  
Street, Boston, MA 02118

\*Corresponding author

Email addresses: ARZ: [zotaar@obgyn.ucsf.edu](mailto:zotaar@obgyn.ucsf.edu); AA: [aaschen@bu.edu](mailto:aaschen@bu.edu); RAR: [rudel@silentspring.org](mailto:rudel@silentspring.org);

JGB: [brody@silentspring.org](mailto:brody@silentspring.org)

# Abstract

## Background

Household cleaning and pesticide products may contribute to breast cancer because many contain endocrine disrupting chemicals or mammary gland carcinogens. This population-based case-control study investigated whether use of household cleaners and pesticides increases breast cancer risk.

## Methods

Participants were 787 Cape Cod, Massachusetts, women diagnosed with breast cancer between 1988 and 1995 and 721 controls. Telephone interviews asked about product use, beliefs about breast cancer etiology, and established and suspected breast cancer risk factors. To evaluate potential recall bias, we stratified product-use odds ratios by beliefs about whether chemicals and pollutants contribute to breast cancer; we compared these results with odds ratios for family history (which are less subject to recall bias) stratified by beliefs about heredity.

## Results

Breast cancer risk increased [two](#)-fold in the highest compared with lowest quartile of self-reported combined cleaning product use (Adjusted OR = 2.1, 95% CI: 1.4, 3.3) and combined air freshener use (Adjusted OR=1.9, 95% CI: 1.2, 3.0). Little association was observed with pesticide use. In stratified analyses, cleaning products odds ratios were more elevated among participants who believed pollutants contribute “a lot” to breast cancer and moved towards the null among the other participants. In comparison, the odds ratio for breast cancer and family history was markedly higher among women who believed that heredity contributes “a lot” (OR = 2.6, 95% CI: 1.9, 3.6) and not elevated among others (OR = 0.7, 95% CI: 0.5, 1.1).

## Conclusions

Results of this study suggest that cleaning product use contributes to increased breast cancer risk. However, results also highlight the difficulty of distinguishing in retrospective self-report studies between valid associations and the influence of recall bias. Recall bias may influence higher odds ratios for product use among participants who believed that chemicals and pollutants contribute to breast cancer. Alternatively, the influence of experience on beliefs is another explanation, illustrated by the protective odds ratio for family history among women who do not believe heredity contributes “a lot.” Because exposure to chemicals from household cleaning products is a biologically plausible cause of breast cancer and avoidable, associations reported here should be further examined prospectively.

## Background

Pesticides, household cleaners, and air fresheners are of interest in breast cancer research because many contain ingredients that are mammary gland carcinogens in animals [1] or endocrine disrupting compounds (EDCs), including compounds that affect growth of estrogen-sensitive human breast cancer cells [2] or affect mammary gland development [3]. Mammary gland tumors have been observed in animal studies of pesticides such as dichlorvos, captafol, and sulfallate; methylene chloride (in some fabric cleaners); nitrobenzene (soaps, polishes); and perfluorinated compounds (stain-resistant, waterproof coatings) [1, 4, 5]. Phthalates, alkylphenols, parabens, triclosan, and polycyclic musks used as surfactants, solvents, preservatives, antimicrobials, and fragrances have shown weak estrogenic or anti-androgenic effects in both *in vitro* and *in vivo* tests [4-16]. Pesticides identified as EDCs include dichlorodiphenyl trichloroethane (DDT), chlordane, methoxychlor, atrazine, lindane (lice control), vinclozolin and benomyl (fungicides), and several current use insecticides such as cypermethin [6-13]. When given early in life, atrazine, nonylphenol, perfluorinated compounds, and the plastics monomer bisphenol A influence rat mammary gland development in a way that may affect tumor susceptibility [14-18]. These chemicals are widely used and many have been detected in blood and urine from a representative sample of the US population; concentrations vary over several orders of magnitude [19-26]. In household air and dust and women's urine tested in the Cape Cod Breast Cancer and Environment Study, we detected an average of 26 EDCs per home, including 27 pesticides and a variety of estrogenic phenols from household cleaners [27]. Taken together, the laboratory studies of biological activity and evidence of widespread human exposure suggest that use of products containing mammary gland carcinogens or EDCs may contribute to breast cancer in humans. No epidemiological studies we know of have reported on the relationship between cleaning product use and breast cancer, and previous breast cancer studies of pesticides have been largely limited to organochlorine compounds [28]. Organochlorine studies have been mostly null, but interpretation is

limited because proxies of exposure were measured in blood taken years after the compounds were banned in the US, often in older women and after diagnosis [29]. In a study that avoids these limitations by using archived blood collected from young women in 1959 to 1967, Cohn et al. [30] reported ~~five~~5-fold higher breast cancer risk among women who had the highest residues of DDT and were exposed before they were 14 years old. In addition, the Long Island Breast Cancer Study found 30% higher breast cancer risk among women who reported the highest home pesticide use [31]. Self-reported product use, such as the Long Island measures, has the potential to represent exposure over many years to a wide range of compounds; although retrospective reports may be biased by differential reporting accuracy between cases and controls [32].

To investigate the relationship between use of cleaning and pesticide products and risk of breast cancer, while considering possible recall bias, we conducted a case-control study of breast cancer and self-reported product use on Cape Cod, Massachusetts, in which we also measured beliefs about breast cancer causation, a possible source of recall bias. Cape Cod is a coastal peninsula where breast cancer incidence has been elevated. Annual female breast cancer incidence in 2002 – 2006 was 151.0 per 100,000 (95% CI 142.6 - 159.8) [33]. The pattern of higher incidence in Cape Cod towns than elsewhere in Massachusetts dates to the initiation of the state cancer registry in 1982 [34]. In the Collaborative Breast Cancer Study, risk was elevated among Cape Cod women compared with other Massachusetts participants after controlling for breast cancer risk factors [35]. In the Cape Cod Breast Cancer and Environment Study case-control study, longer years of residence on Cape Cod was associated with higher risk after controlling for established breast cancer risk factors [36].

# Methods

## Study population

Details of the Cape Cod Study have been described previously [37]. Briefly, we conducted a case-control study of invasive breast cancer occurring on Cape Cod in 1988-1995. Cases were female permanent residents of Cape Cod for at least [six](#) months before a breast cancer diagnosis reported to the Massachusetts Cancer Registry (MCR). Controls were female permanent Cape Cod residents during the same years, had resided there at least [six](#) months, and were frequency matched to cases on decade of birth and vital status. Controls under 65 years of age were selected using random digit dialing; controls over 65 years of age were randomly selected from the Centers for Medicare and Medicaid Services (CMS).

The Cape Cod Study expands on a study of breast cancer and tetrachloroethylene (PCE) in drinking water [38]. Cases diagnosed in 1988-1993 in [eight](#) towns and their controls were interviewed in 1997-1998 in the PCE study. Cases diagnosed in 1994-1995 in those [eight](#) towns and in 1988-1995 in the remaining [seven](#) towns and their controls were interviewed in 1999-2000. Among 1,578 eligible living and deceased cases identified by MCR, 1,165 women (74%) or their proxies participated, 228 (14%) could not be located or contacted, and 185 (12%) refused to participate. Among 1,503 eligible controls, 1,016 (68%) participated.

For the present analysis, we excluded 368 cases and 287 controls who were interviewed by proxy, and 10 cases and [eight](#) controls who were missing data for one or more key analytic variables. Given that most women for whom we obtained proxy interviews were deceased, excluded women were older, and, consistent with being older, they were less educated. Within the included or excluded groups, cases and controls did not differ demographically, suggesting no selection bias. Exclusions left 787 cases and 721 controls for pesticide analyses. Cleaning product questions were asked only in 1999-2000 interviews, resulting in 413 cases and 403 controls for whom these data were available.

We obtained permission to use confidential data from MCR, CMS, and hospitals where cases were diagnosed. The Boston University Institutional Review Board and Massachusetts Department of Public Health Human Research Review Committee approved the study protocol. Participants were asked for informed consent at the outset of interviews.

## Interviews

Trained telephone interviewers administered a structured questionnaire on established and hypothesized breast cancer risk factors including family history of breast cancer, menstrual and reproductive history, height, weight, alcohol and tobacco use, physical activity, pharmaceutical hormone use, and education. Information on residential cleaning product and pesticide use was obtained. Participants in 1999-2000 interviews were asked about [five](#) categories of cleaning products, including solid and spray air fresheners, surface cleaners, oven cleaners, and mold/mildew products. All participants were asked about use of 10 categories of pesticides in and around their homes, including insecticides, lawn care, herbicides, lice control, insect repellents, and pest control on pets. The 1999-2000 interviews asked about mothballs and treatments for termites and carpenter ants. Participants were first asked if the product was ever used in their home. Participants were then asked to estimate frequency of use using predefined categories. To exclude exposures after diagnosis or index year, participants were asked to report the first and last years of use for pesticides, and use before their diagnosis or index year for cleaning products. At the end of the interview, participants were asked about their beliefs about [four](#) factors that may contribute to breast cancer: heredity, diet, chemicals and pollutants in the air or water, and a woman's reproductive or breastfeeding history. Participants were asked whether each contributes to breast cancer "a lot, a little, or not at all." "Don't know" responses were coded. Interview questions can be viewed at <http://silentspring.org/cape-cod-breast-cancer-and-environment-study-survey-instruments>.

## Statistical analysis

Unconditional logistic regression was used to calculate odds ratios (ORs) and 95% confidence intervals (CIs). The following “core” matching variables and potential confounders were included in adjusted odds ratio analyses based on *a priori* consideration of the research design and well-established breast cancer risk factors: age at diagnosis or index year, education, family history of breast cancer in a first degree female relative, breast cancer diagnosis prior to the current diagnosis or index year, and age at first live or still birth ( $\geq 30$  years of age or nulliparous vs.  $<30$  years of age). Pesticide analyses were adjusted for study (PCE or Cape study). Missing values for family history [for 45 \(3%\) participants](#) -were imputed as “no.” [The percent missing information on family history did not differ between cases and controls.](#) The following potential confounders were evaluated: mammography use, medical radiation, lactation, hormone replacement therapy, oral contraceptive use, diethylstilbestrol exposure, body mass index, smoking, alcohol consumption, teen and adult physical activity, race, marital status, and religion. None of these variables changed the “core”-adjusted odds ratio estimates by  $\geq 10\%$ , so they were not included in final models.

We evaluated ever vs. never use and categorical variables reflecting frequency of use. “Never users” of each product type formed the reference group. If a participant reported ever using a product but the frequency was missing, frequency was imputed as the median for that product. To aggregate “like” exposures, [three3](#) variables were constructed by summing frequency of use for [two2](#) types of air fresheners, [five5](#) types of cleaning products, and [eight8](#) types of pesticides. Aggregated scores were divided into quartiles based on the distribution of controls. The lowest quartile constituted the reference group. Tests for trends were conducted by modeling ordinal terms for categories of product use or quartiles in the multivariate model.

Because participants’ awareness of a hypothesis may bias exposure reporting [39], we evaluated differences in beliefs about disease causation between cases and controls using the chi

square test. We evaluated differences in product-use odds ratios by beliefs about whether chemicals/pollutants contribute to breast cancer by 1) including an interaction term for beliefs and product use in the final model and 2) stratifying by beliefs. Beliefs were dichotomized as those who said chemicals/pollutants contribute to breast cancer “a lot” versus “a little,” “not at all,” or “don’t know.”

Weiss [40] notes that recall bias is not the only explanation for differences in odds ratios by knowledge or attitudes about a hypothesis; so to aid interpretation of product use results, we conducted a comparison analysis of differences in family history odds ratios by beliefs about whether heredity contributes “a lot” to breast cancer. This comparison is useful, because the accuracy of self-reported family history can be compared with medical records, and the relationship between family history and breast cancer is well-established independent of self-reports. [As a sensitivity analysis, we also examined un-stratified and stratified family history odds ratios excluding those subjects who were missing information on family history.](#)

All analyses were conducted in SAS version 9.1 (SAS Institute, Cary, NC). Figures were constructed in R software 2.6.1, (R Foundation for Statistical Computing, Vienna, Austria). Statistical significance was defined by a ([two](#)-sided) *P*-value of 0.05 or lower.

## Results

Study participants were predominantly white (98%), 60-80 years of age (60%) with high school or higher education (94 %); more cases (25%) than controls (19%) reported a family history of breast cancer. Characteristics of participants are shown in Table 1. Participants in this analysis of product use were demographically similar to characteristics previously reported for all cases and controls, except for being younger and more educated, due to exclusion of proxy interviews [37].

## Products use

Breast cancer risk increased approximately two-fold in the highest compared with lowest quartile of combined cleaning product use (OR = 2.1, 95% CI: 1.4, 3.3) and combined air freshener use (OR=1.9, 95% CI: 1.2, 3.0) (Table 2). Ever use of air freshener spray (OR=1.2, 95% CI: 0.9, 1.8), solid air freshener (OR=1.7, 95% CI: 1.2, 2.3) or mold/mildew control (OR=1.7, 95% CI: 1.2, 2.3) was associated with higher risk, with evidence of positive dose response and significant  $P_{\text{trend}}$  for solid air freshener and mold/mildew control with bleach. Surface and oven cleaners were not associated with breast cancer risk.

Combined use of pesticide products was not associated with risk of breast cancer (Table 3). Odds ratios for individual pesticide types were null or slightly and nonsignificantly elevated, with the exception of insect repellent use (OR = 1.5, 95% CI: 1.0, 2.3 for most frequent insecticide use compared with never use;  $P_{\text{trend}} = 0.05$ ).

## Differences by beliefs about disease causation

Cases and controls differed significantly in beliefs about the role of heredity and of chemicals and pollutants in breast cancer (Table 4). Among controls, 66% said heredity contributes “a lot” compared with 42% of cases ( $P < 0.01$ ); 57% of controls and 60% of cases said “chemicals and pollutants in the air or water” contribute “a lot” ( $P < 0.05$ ).

In stratified analyses, odds ratios for cleaning products were consistently elevated within the group who said chemicals/pollutants contribute “a lot” to breast cancer, but associations moved towards the null in the other participants (Table 5). For example, the odds ratio for the highest quartile of combined cleaning product use was 3.2 (95% CI: 1.8, 5.9) among women who believed chemicals/pollutants contribute “a lot” compared to 1.2 (95% CI: 0.6, 2.6) among others. The interaction was not statistically significant ( $P = 0.25$ ). (However, the interaction term does not detect departures from additivity.)

Similarly, odds ratios for pesticides were higher among participants who believed that chemicals/pollutants contribute “a lot” to breast cancer. For example, the odds ratio for most frequent insect repellent use was 2.0 (95% CI; 1.1, 3.4) in this belief group compared with 0.8 (95% CI; 0.4, 1.6) among others. Pesticide odds ratios stratified by beliefs are shown in Table 6.

In addition, a similar pattern was observed in the odds ratios for family history of breast cancer stratified by beliefs about heredity as a cause. The odds ratio for breast cancer and family history was markedly higher among women who believed that heredity contributes “a lot” (OR = 2.6, 95% CI: 1.9, 3.6) and not elevated among others (OR = 0.7, 95% CI: 0.5, 1.1, interaction term  $P < 0.01$ ). The parallel pattern of results for both cleaning products and family history when stratified by relevant beliefs is shown in Figure 1. (For all participants, the odds ratio for family history was 1.4 (95% CI: 1.1, 1.9)). [The un-stratified and stratified effect estimates for family history of breast cancer in adjusted models remain virtually unchanged after removing subjects with imputed values for family history.](#)

## Discussion

Women with the highest combined cleaning product use had [two](#)<sup>2</sup>-fold increased breast cancer risk compared to those with the lowest reported use. Use of air fresheners and products for mold and mildew control were associated with increased risk. To our knowledge, this is the first published report on cleaning product use and risk of breast cancer.

Some common ingredients of air fresheners and products for mold and mildew have been identified as EDCs or carcinogens, supporting the biological plausibility of the elevated odds ratios we observed [1, 15, 41-51]. EDCs such as synthetic musks and phthalates are commonly used in air fresheners [19, 25-27, 43, 48, 52-54] and antimicrobials, phthalates, and alkylphenolic surfactants are often in mold and mildew products [19, 22-24, 26, 27, 41, 42, 44, 47, 49, 55]. In addition, air fresheners may contain: terpenes, which can react with background ozone to form formaldehyde, a

human carcinogen [50]; benzene and styrene [51], which are animal mammary gland carcinogens [1]; and other chemicals whose mechanisms of action are not understood [56]. Although exposure levels may be low and EDCs are typically less potent than endogenous hormones, limited knowledge of product formulations, exposure levels, and the biological activity and toxicity of chemical constituents alone and in combination make it difficult to assess risks associated with product use. Additionally, the products we assessed may be proxies for other products that we did not include, and mold/mildew products may be proxies for exposure to mycotoxins, some of which are EDCs [2, 57-59].

Our results do not corroborate the findings of a Long Island, NY, case-control study [31]. The Long Island study found increased breast cancer risk associated with self-reported overall pesticide use and use of lawn and garden pesticides, but we did not. Neither study found associations for nuisance pest control (roaches, ants, etc.). While we observed increased risk with frequent use of insect repellent, the Long Island study did not. Differences between the studies may be due to differences in pesticide practices in the 2 regions, greater statistical power in the Long Island study, or differences in the survey instruments. Phthalates and permethrins, which are in some insect repellants, have been identified as EDCs [10, 13, 46, 60].

Using interviews to assess product-related exposures, as we did in this study, has several advantages. It is inexpensive, noninvasive, and integrates exposures over many years and to frequently-occurring chemical mixtures. Currently available biological measures cannot achieve these important characteristics.

However, self-reported exposures are subject to multiple sources of error resulting in misclassification. Our questions were cognitively demanding in that they asked participants to report behaviors occurring months to years before. Responses failed to capture use by others, including residues from before the participant moved into the residence; exposures specific to critical periods such as adolescence; exposures outside the home; or all products that contain the chemicals of interest. Although we asked about the first and most recent years of pesticide use, we considered the quality of

these data inadequate to evaluate effects of duration of use. Much of the error resulting from limitations in exposure measurement is likely nondifferential, biasing odds ratios toward the null. Self-reports are also vulnerable to bias from differential recall between cases and controls. Women diagnosed with breast cancer may have searched their history for explanations, priming greater recall of product use than for controls. Werler [39], among others, hypothesizes that this type of bias occurs when cases are aware of the study hypothesis, resulting in higher exposure reporting and, consequently, an elevated odds ratio. We empirically investigated this possibility by stratifying odds ratios by beliefs about breast cancer causes, and, consistent with Werler's hypothesis, we observed higher odds ratios for product use among women who believe chemicals and pollution contribute "a lot" to breast cancer than among others.

However, the family history odds ratios stratified by beliefs suggest another interpretation. The much higher family history odds ratios for women who said heredity contributes "a lot" is unlikely to be primarily due to recall bias, given that self-reporting of first degree family members with breast cancer is quite-generally accurate [61-66]. Previous research indicates that over-reporting of first degree breast cancer family history is negligible [63, 65, 66] and that some under-reporting by controls in comparison with cases is likely to occur (and could bias odds ratios), but this effect is unlikely to be substantial [64-66] More likely, the-our results are primarily driven by cases who formed their belief that heredity does not contribute "a lot" after their own diagnosis, based on their own lack of relatives with breast cancer. Our data support this idea: 36% of cases with no family history said heredity contributes "a lot" to breast cancer compared with 61% of cases who did have a family history (Table 7). In this situation, an odds ratio for women who do not think heredity contributes "a lot" over-represents cases with no family history, lowering the effect estimate. Thus, our results support Weiss's argument [40] that limiting estimates to a subgroup based on beliefs about disease causation may introduce error. Among the group who do not believe heredity contributes "a lot" to breast cancer, the odds ratio of 0.7 (95% CI: 0.5, 1.1) contrasts sharply with the pooled odds ratio of 2.1 (95% CI: 2.0,

2.2) for first degree family history of breast cancer from previous studies [67]. Generally, Weiss argues, effect estimates based on one belief or knowledge subgroup lack precision and may underestimate the true effect, since they are limited to smaller numbers and not representative of the study population [40].

The divergent odds ratios in the stratified analysis for family history, which is not likely affected much by recall bias, warns us that the elevated odds ratios for cleaning products should not be too quickly dismissed as resulting from recall bias, since an alternative interpretation is that women's beliefs about disease causation result from their experience. Women who have been intensive product users and are then diagnosed with breast cancer may form the belief that chemicals influenced their risk, or they may be sensitized to news media stories about associations between chemicals and disease and form beliefs from this experience. Social scientists have studied the phenomenon of health beliefs formed from experience in a variety of settings, including the emergence of beliefs about environmental causation among breast cancer activists [68].

Furthermore, the substantial underestimate of risk for family history among women who said heredity does not contribute "a lot" cautions us against limiting product use analyses to a non-belief subgroup as a strategy for dealing with possible recall bias. In addition, the findings of elevated risk for some cleaning products and not others lends evidence that recall bias may not account for elevated risks, even if it contributes in part, since bias would be expected to similarly influence reporting for all the products.

Studies that rely on questionnaire data can sometimes assess the validity of self-reported data against another metric, such as chemical concentrations in relevant exposure media. For example, Colt et al. [69] found significant associations between self-reports of type of pest treated and concentrations of specific pesticides in house dust. We collected air, dust, and urine measurements for 120 homes and their residents, but comparison of these data with self-reports was not conducted for several reasons. The number of homes is small, the one-time environmental measurements may not correspond well

with product use over years, measurements capture sources other than home product use, and our self-reports cover past residences as well as the sampled homes. Our ambiguous self-report findings point to the value of thoughtfully incorporating environmental chemical measurements into prospective cohort studies such as the National Children's Study and the Sister Study.

Overall strengths of our study are the population-based design with case identification from the MCR, extensive interviews allowing evaluation of possible confounding by established and hypothesized breast cancer risk factors, and assessment of exposures that extend years before diagnosis and encompass chemicals in use during the past 30 years as well as the more-studied banned organochlorines. Limitations include loss of information due to deaths of women with less treatable cancers. Also, we lack a truly unexposed reference group, limiting contrast in levels of exposure. The self-reported product use exposures have potential for differential and nondifferential error. We did not have adequate numbers to separately evaluate effects in younger women, though some other studies suggest that environmental pollutants may have greater influence on premenopausal disease [28].

To our knowledge, this is the first epidemiological study to suggest an association between cleaning product use, in particular air fresheners and products for mold and mildew control, and elevated breast cancer risk. This association is biologically plausible based on ingredients of these products, such as musks, antimicrobials, and phthalates [1-27, 41-49, 70-73], and these reported exposures may be proxies for other un-assessed causative exposures. The modest association and possibility of recall bias make interpretation tentative. Given widespread exposure to cleaning products and scented products, follow-up study is important. Prospective designs, which avoid differential recall, can be helpful. The difficulty of obtaining human evidence on environmental chemicals and breast cancer in the short-term means we must rely more on laboratory evidence as a basis for public health policies to control exposure.

## Conclusions

Laboratory studies have found that many chemicals in home-use pesticides and household cleaning products are mammary gland carcinogens in rodents, influence the proliferation of estrogen-sensitive cells, or affect mammary gland development following prenatal exposure. These findings suggest effects of pesticide and cleaning product use on breast cancer risk, so we undertook a case-control study of breast cancer and self-reported product use. We found increased breast cancer risk among women reporting the highest use of cleaning products and air fresheners. We found little association with home pesticide use. The self-reported product use measures we used have the advantage of integrating exposure over many years to chemical mixtures. However, these measures remain incomplete, likely resulting in nondifferential misclassification, and they are open to recall bias. Investigators sometimes try to avoid the influence of recall bias by limiting analyses to participants who do not subscribe to the study hypothesis, but our results show this may not be a good strategy, given that in our study it would obscure the well-established association between family history and breast cancer risk. In order to avoid possible recall bias, we recommend further study of cleaning products and breast cancer using prospective self-reports and measurements in environmental and biological media.

## Abbreviations

CI, confidence interval; CMS, Centers for Medicare and Medicaid Services; EDCs, endocrine-disrupting compounds; OR, odds ratio; MCR, Massachusetts Cancer Registry; PCE, tetrachloroethylene; Ref, reference; Adj OR, adjusted odds ratio; NY, New York; US, United States; [BC, breast cancer](#).

## Competing interests

The authors have no competing interests.

## Authors' contributions

ARZ conducted the statistical analyses and led drafting of the manuscript. AA designed and oversaw the PCE Study; contributed to the design, data collection, and epidemiological analysis of the Cape Cod Study; and collaborated on editorial issues. RAR contributed to the design, data collection, and analysis of the Cape Cod Study, particularly with respect to the toxicologic characteristics of exposures, and collaborated in drafting the manuscript. JGB led the design, implementation, and analysis of the Cape Cod Study and collaborated in drafting the manuscript; she conceptualized the comparative analysis of product use and family history odds ratios stratified by beliefs as a strategy for understanding possible response bias. All authors read and approved the final manuscript.

## Acknowledgements

Dr. Nancy Maxwell contributed to drafting the cleaning products questionnaire. Dr. Wendy McKelvey conducted early statistical analyses and contributed to our thinking about possible recall bias. Laura Perovich assisted in data analysis and manuscript preparation. This work was supported by an appropriation of the Massachusetts legislature administered by the Massachusetts Department of Public Health; the Susan S. Bailis Breast Cancer Research Fund at Silent Spring Institute; and US Centers for Disease Control and Prevention grants R01 DP000218-01 and 1H75EH000377-01.

## References

1. Rudel RA, Attfield KR, Schifano J, Brody JG: **Chemicals causing mammary gland tumors in animals signal new directions for epidemiology, chemicals testing, and risk assessment for breast cancer prevention.** *Cancer* 2007, **109**:2635-2666.
2. Soto AM, Sonnenschein C, Chung KL, Fernandez MF, Olea N, Serrano FO: **The E-SCREEN assay as a tool to identify estrogens: an update on estrogenic environmental pollutants.** *Environ Health Perspect* 1995, **103 Suppl 7**:113-122.

3. Fenton SE: **Endocrine-disrupting compounds and mammary gland development: early exposure and later life consequences.** *Endocrinology* 2006, **147**:S18-24.
4. Sibinski LJ: **Two year oral (diet) toxicity/carcinogenicity study of fluorochemical FC-143 in rats.** In *3M Company/Riker Exp No 0281CR0012*: 3M Company/Riker; 1987.
5. National Toxicology Program: **Abstracts of NTP long-term cancer studies.** Research Triangle Park, NC: National Institute of Environmental Health Sciences; 2007.
6. Uzumcu M, Kuhn PE, Marano JE, Armenti AE, Passantino L: **Early postnatal methoxychlor exposure inhibits folliculogenesis and stimulates anti-Mullerian hormone production in the rat ovary.** *J Endocrinol* 2006, **191**:549-558.
7. Morinaga H, Yanase T, Nomura M, Okabe T, Goto K, Harada N, Nawata H: **A benzimidazole fungicide, benomyl, and its metabolite, carbendazim, induce aromatase activity in a human ovarian granulosa-like tumor cell line (KGN).** *Endocrinology* 2004, **145**:1860-1869.
8. Maranghi F, Rescia M, Macri C, Di Consiglio E, De Angelis G, Testai E, Farini D, De Felici M, Lorenzetti S, Mantovani A: **Lindane may modulate the female reproductive development through the interaction with ER-beta: an in vivo-in vitro approach.** *Chem Biol Interact* 2007, **169**:1-14.
9. Liu P, Song XX, Yuan WH, Wen WH, Wu XN, Li J, Chen XM: **Effects of cypermethrin and methyl parathion mixtures on hormone levels and immune functions in Wistar rats.** *Archives of Toxicology* 2006, **80**:449-457.
10. Jin Y, Chen R, Sun L, Wang W, Zhou L, Liu W, Fu Z: **Enantioselective induction of estrogen-responsive gene expression by permethrin enantiomers in embryo-larval zebrafish.** *Chemosphere* 2009, **74**:1238-1244.
11. Gwinn MR, Whipkey DL, Tennant LB, Weston A: **Differential gene expression in normal human mammary epithelial cells treated with malathion monitored by DNA microarrays.** *Environ Health Perspect* 2005, **113**:1046-1051.
12. Cupp AS, Skinner MK: **Actions of the endocrine disruptor methoxychlor and its estrogenic metabolite on in vitro embryonic rat seminiferous cord formation and perinatal testis growth.** *Reprod Toxicol* 2001, **15**:317-326.
13. Chen HY, Xiao JG, Hu G, Zhou JW, Xiao H, Wang XR: **Estrogenicity of organophosphorus and pyrethroid pesticides.** *Journal of Toxicology and Environmental Health-Part A* 2002, **65**:1419-1435.
14. Enoch RR, Stanko JP, Greiner SN, Youngblood GL, Rayner JL, Fenton SE: **Mammary gland development as a sensitive end point after acute prenatal exposure to an atrazine metabolite mixture in female Long-Evans rats.** *Environ Health Perspect* 2007, **115**:541-547.
15. Moon HJ, Han SY, Shin JH, Kang IH, Kim TS, Hong JH, Kim SH, Fenton SE: **Gestational exposure to nonylphenol causes precocious mammary gland development in female rat offspring.** *J Reprod Dev* 2007, **53**:333-344.
16. Vorderstrasse BA, Fenton SE, Bohn AA, Cundiff JA, Lawrence BP: **A novel effect of dioxin: exposure during pregnancy severely impairs mammary gland differentiation.** *Toxicol Sci* 2004, **78**:248-257.
17. White SS, Kato K, Jia LT, Basden BJ, Calafat AM, Hines EP, Stanko JP, Wolf CJ, Abbott BD, Fenton SE: **Effects of perfluorooctanoic acid on mouse mammary gland development and differentiation resulting from cross-foster and restricted gestational exposures.** *Reprod Toxicol* 2009, **27**:289-298.
18. Vandenberg LN, Maffini MV, Schaeberle CM, Ucci AA, Sonnenschein C, Rubin BS, Soto AM: **Perinatal exposure to the xenoestrogen bisphenol-A induces mammary intraductal hyperplasias in adult CD-1 mice.** *Reprod Toxicol* 2008, **26**:210-219.

19. Centers for Disease Control and Prevention: **Third national report on human exposure to environmental chemicals.** *National Center for Environmental Health, Division of Laboratory Science* 2005.
20. Calafat AM, Kuklenyik Z, Reidy JA, Caudill SP, Tully JS, Needham LL: **Serum concentrations of 11 polyfluoroalkyl compounds in the u.s. population: data from the national health and nutrition examination survey (NHANES).** *Environ Sci Technol* 2007, **41**:2237-2242.
21. Calafat AM, Wong LY, Ye X, Reidy JA, Needham LL: **Concentrations of the sunscreen agent benzophenone-3 in residents of the United States: National Health and Nutrition Examination Survey 2003--2004.** *Environ Health Perspect* 2008, **116**:893-897.
22. Calafat AM, Ye X, Wong LY, Reidy JA, Needham LL: **Urinary concentrations of triclosan in the U.S. population: 2003-2004.** *Environ Health Perspect* 2008, **116**:303-307.
23. Calafat AM, Ye X, Wong LY, Reidy JA, Needham LL: **Exposure of the U.S. population to bisphenol A and 4-tertiary-octylphenol: 2003-2004.** *Environ Health Perspect* 2008, **116**:39-44.
24. Calafat AM, Kuklenyik Z, Reidy JA, Caudill SP, Ekong J, Needham LL: **Urinary concentrations of bisphenol A and 4-nonylphenol in a human reference population.** *Environ Health Perspect* 2005, **113**:391-395.
25. Kuklenyik Z, Bryant XA, Needham LL, Calafat AM: **SPE/SPME-GC/MS approach for measuring musk compounds in serum and breast milk.** *J Chromatogr B Analyt Technol Biomed Life Sci* 2007, **858**:177-183.
26. Silva MJ, Barr DB, Reidy JA, Malek NA, Hodge CC, Caudill SP, Brock JW, Needham LL, Calafat AM: **Urinary levels of seven phthalate metabolites in the U.S. population from the National Health and Nutrition Examination Survey (NHANES) 1999-2000.** *Environ Health Perspect* 2004, **112**:331-338.
27. Rudel RA, Camann DE, Spengler JD, Korn LR, Brody JG: **Phthalates, alkylphenols, pesticides, polybrominated diphenyl ethers, and other endocrine-disrupting compounds in indoor air and dust.** *Environmental Science & Technology* 2003, **37**:4543-4553.
28. Brody JG, Moysich KB, Humblet O, Attfield KR, Beehler GP, Rudel RA: **Environmental pollutants and breast cancer: epidemiologic studies.** *Cancer* 2007, **109**:2667-2711.
29. Snedeker SM: **Pesticides and breast cancer risk: A review of DDT, DDE, and Dieldrin.** *Environmental Health Perspectives* 2001, **109**:35-47.
30. Cohn BA, Wolff MS, Cirillo PM, Sholtz RI: **DDT and Breast Cancer in Young Women: New Data on the Significance of Age at Exposure.** *Environmental Health Perspectives* 2007, **115**:1406-1414.
31. Teitelbaum SL, Gammon MD, Britton JA, Neugut AI, Levin B, Stellman SD: **Reported residential pesticide use and breast cancer risk on Long Island, New York.** *American Journal of Epidemiology* 2007, **165**:643-651.
32. Coughlin SS: **Recall bias in epidemiologic studies.** *J Clin Epidemiol* 1990, **43**:87-91.
33. **State Cancer Profiles**  
[<http://statecancerprofiles.cancer.gov/map/scpMapDataTable.php?25&001&055&00&2&1&0&1&6&0>]
34. **Cape Cod Breast Cancer and the Environment Atlas**  
[<http://library.silent.spring.org/atlas/breastcancer/index.asp>]
35. Silent Spring Institute: **Cape Cod Breast Cancer and Environment Study: Final Report.** Newton, MA; 1997.
36. McKelvey W, Brody JG, Aschengrau A, Swartz CH: **Association between residence on Cape Cod, Massachusetts, and breast cancer.** *Ann Epidemiol* 2004, **14**:89-94.

37. Brody JG, Aschengrau A, McKelvey W, Rudel RA, Swartz CH, Kennedy T: **Breast cancer risk and historical exposure to pesticides from wide-area applications assessed with GIS.** *Environ Health Perspect* 2004, **112**:889-897.
38. Aschengrau A, Rogers S, Ozonoff D: **Perchloroethylene-contaminated drinking water and the risk of breast cancer: additional results from Cape Cod, Massachusetts, USA.** *Environmental Health Perspectives* 2003, **111**:167-173.
39. Werler MM, Shapiro S, Mitchell AA: **Periconceptional folic acid exposure and risk of occurrent neural tube defects.** *Jama* 1993, **269**:1257-1261.
40. Weiss NS: **Should we consider a subject's knowledge of the etiologic hypothesis in the analysis of case-control studies?** *Am J Epidemiol* 1994, **139**:247-249.
41. Ahn KC, Zhao B, Chen J, Cherednichenko G, Sanmarti E, Denison MS, Lasley B, Pessah IN, Kultz D, Chang DP, et al: **In vitro biologic activities of the antimicrobials triclocarban, its analogs, and triclosan in bioassay screens: receptor-based bioassay screens.** *Environ Health Perspect* 2008, **116**:1203-1210.
42. Bonefeld-Jorgensen EC, Long M, Hofmeister MV, Vinggaard AM: **Endocrine-disrupting potential of bisphenol A, bisphenol A dimethacrylate, 4-n-nonylphenol, and 4-n-octylphenol in vitro: new data and a brief review.** *Environmental Health Perspectives* 2007, **115 Suppl 1**:69-76.
43. Duty SM, Ackerman RM, Calafat AM, Hauser R: **Personal care product use predicts urinary concentrations of some phthalate monoesters.** *Environmental Health Perspectives* 2005, **113**:1530-1535.
44. Gee RH, Charles A, Taylor N, Darbre PD: **Oestrogenic and androgenic activity of triclosan in breast cancer cells.** *J Appl Toxicol* 2008, **28**:78-91.
45. Hauser R, Meeker JD, Duty S, Silva MJ, Calafat AM: **Altered semen quality in relation to urinary concentrations of phthalate monoester and oxidative metabolites.** *Epidemiology* 2006, **17**:682-691.
46. Howdeshell KL, Wilson VS, Furr J, Lambright CR, Rider CV, Blystone CR, Hotchkiss AK, Gray LE, Jr.: **A mixture of five phthalate esters inhibits fetal testicular testosterone production in the sprague-dawley rat in a cumulative, dose-additive manner.** *Toxicol Sci* 2008, **105**:153-165.
47. Kumar V, Chakraborty A, Kural MR, Roy P: **Alteration of testicular steroidogenesis and histopathology of reproductive system in male rats treated with triclosan.** *Reprod Toxicol* 2009, **27**:177-185.
48. Schreurs RH, Sonneveld E, Jansen JH, Seinen W, van der Burg B: **Interaction of polycyclic musks and UV filters with the estrogen receptor (ER), androgen receptor (AR), and progesterone receptor (PR) in reporter gene bioassays.** *Toxicol Sci* 2005, **83**:264-272.
49. Zorrilla LM, Gibson EK, Jeffay SC, Crofton KM, Setzer WR, Cooper RL, Stoker TE: **The effects of triclosan on puberty and thyroid hormones in male Wistar rats.** *Toxicol Sci* 2009, **107**:56-64.
50. Nazaroff WW, Weschler CJ: **Cleaning products and air fresheners: exposure to primary and secondary air pollutants.** *Atmospheric Environment* 2004, **38**:2841-2865.
51. Torfs R, Brouwere KD, Spruyt M, Goelen E, Nickmilder M, Bernard A: **Exposure and Risk Assessment of Air Fresheners.** pp. 2008/IMS/R/2222: Flemish Institute for Technological Research NV (VITO); 2008:2008/IMS/R/2222.
52. Reiner JL, Kannan K: **A survey of polycyclic musks in selected household commodities from the United States.** *Chemosphere* 2006, **62**:867-873.
53. Reiner JL, Wong CM, Arcaro KF, Kannan K: **Synthetic musk fragrances in human milk from the United States.** *Environmental Science & Technology* 2007, **41**:3815-3820.

54. van der Burg B, Schreurs R, van der Linden S, Seinen W, Brouwer A, Sonneveld E: **Endocrine effects of polycyclic musks: do we smell a rat?** *International Journal of Andrology* 2008, **31**:188-193.
55. Rudel RA, Perovich LJ: **Endocrine disrupting chemicals in indoor and outdoor air.** *Atmospheric Environment* 2009, **43**:170-181.
56. Steinemann AC: **Fragranced consumer products and undisclosed ingredients.** *Environmental Impact Assessment Review* 2009, **29**:32-38.
57. Nielsen KF: **Mycotoxin production by indoor molds.** *Fungal Genetics and Biology* 2003, **39**:103-117.
58. Pestka JJ, Yike I, Dearborn DG, Ward MDW, Harkema JR: **Stachybotrys chartarum, trichothecene mycotoxins, and damp building-related illness: New insights into a public health enigma.** *Toxicological Sciences* 2008, **104**:4-26.
59. Tiemann U, Tomek W, Schneider F, Muller M, Pohland R, Vanselow J: **The mycotoxins alternariol and alternariol methyl ether negatively affect progesterone synthesis in porcine granulosa cells in vitro.** *Toxicology Letters* 2009, **186**:139-145.
60. Brown M, Hebert AA: **Insect repellents: an overview.** *J Am Acad Dermatol* 1997, **36**:243-249.
61. Chang ET, Smedby KE, Hjalgrim H, Glimelius B, Adami HO: **Reliability of self-reported family history of cancer in a large case-control study of lymphoma.** *J Natl Cancer Inst* 2006, **98**:61-68.
62. Ziogas A, Anton-Culver H: **Validation of family history data in cancer family registries.** *Am J Prev Med* 2003, **24**:190-198.
63. Parent ME, Ghadirian P, Lacroix A, Perret C: **Accuracy of Reports of Familial Breast-Cancer in a Case-Control Series.** *Epidemiology* 1995, **6**:184-186.
64. Floderus B, Barlow L, Mack TM: **Recall bias in subjective reports of familial cancer.** *Epidemiology (Cambridge, Mass)* 1990, **1**:318-321.
65. Murff HJ, Spigel DR, Syngal S: **Does this patient have a family history of cancer? An evidence-based analysis of the accuracy of family cancer history.** *JAMA* 2004, **292**:1480-1489.
66. Parikh-Patel A, Allen M, Wright WE: **Validation of self-reported cancers in the California Teachers Study.** *American journal of epidemiology* 2003, **157**:539-545.
67. Pharoah PD, Day NE, Duffy S, Easton DF, Ponder BA: **Family history and the risk of breast cancer: a systematic review and meta-analysis.** *Int J Cancer* 1997, **71**:800-809.
68. Brown P: *Toxic exposures: contested illnesses and the environmental health movement.* New York: Columbia University Press; 2007.
69. Colt JS, Lubin J, Camann D, Davis S, Cerhan J, Severson RK, Cozen W, Hartge P: **Comparison of pesticide levels in carpet dust and self-reported pest treatment practices in four US sites.** *J Expo Anal Environ Epidemiol* 2004, **14**:74-83.
70. Kang KS, Che JH, Ryu DY, Kim TW, Li GX, Lee YS: **Decreased sperm number and motile activity on the F1 offspring maternally exposed to butyl p-hydroxybenzoic acid (butyl paraben).** *The Journal of Veterinary Medical Science* 2002, **64**:227-235.
71. Rastogi SC, Schouten A, de Kruijf N, Weijland JW: **Contents of methyl-, ethyl-, propyl-, butyl- and benzylparaben in cosmetic products.** *Contact dermatitis* 1995, **32**:28-30.
72. Routledge EJ, Parker J, Odum J, Ashby J, Sumpter JP: **Some alkyl hydroxy benzoate preservatives (parabens) are estrogenic.** *Toxicology and Applied Pharmacology* 1998, **153**:12-19.
73. Shen HY, Jiang HL, Mao HL, Pan G, Zhou L, Cao YF: **Simultaneous determination of seven phthalates and four parabens in cosmetic products using HPLC-DAD and GC-MS methods.** *Journal of Separation Science* 2007, **30**:48-54.



## Figures

### **Figure 1 Cleaning product use, family history, and risk of breast cancer, stratified by beliefs about causation**

Adjusted odds ratios are shown for breast cancer and A) combined cleaning product use stratified by beliefs about environmental chemicals and breast cancer and B) family history of breast cancer stratified by beliefs about heredity and breast cancer, among participants living in Cape Cod, Massachusetts, 1988-1995. Odds ratios are adjusted for age, previous breast cancer diagnosis, age at first birth, and education; additionally, Figure 1A is adjusted for family history of breast cancer and Figure 1B is adjusted for study.

## Tables

**Table 1– Characteristics of Cape Cod Breast Cancer and Environment Study participants with completed pesticide use self-reports**

Characteristic	Cases (N=787)		Controls (N=721)	
	N	%	N	%
<b>Age at diagnosis or index year</b>				
<50	128	16	149	21
50-59	115	15	129	18
60-69	277	35	226	31
70-79	221	28	184	26
≥ 80	46	6	33	5
<b>Education</b>				
< High school graduate	36	5	48	7
High school graduate	241	31	226	31
1-3 years college/vocational school	253	32	230	32
College graduate	144	18	122	17
Graduate work/degree	113	14	95	13
<b>Family history of breast cancer</b>				
Yes	196	25	135	19
No	591	75	586	81
<b>Prior history of breast cancer</b>				
Yes	48	6	46	6
No	739	94	675	94
<b>Age at first live or stillbirth</b>				
<20	171	22	122	17
20-29	104	13	80	11
≥30	458	58	456	63
Nulliparous	54	7	63	9
<b>Menopause status at diagnosis or index year</b>				
Pre-menopause	144	19	194	28
Post-menopause	615	81	505	72

Data for 27 cases and 18 controls were missing for the “Family history of breast cancer” characteristic. Data for 28 cases and 22 controls were missing for the “Menopause status at diagnosis or index year” characteristic.

**Table 2- Adjusted odds ratios for breast cancer and reported cleaning product use, Cape Cod, Massachusetts, 1988-1995**

Product category	Cases (No.)	Controls (No.)	Adjusted OR	95% CI	<i>P</i> <sub>trend</sub>
<b>Combined cleaning product use</b>					
Quartile 1	91	99	1.0	Reference	
Quartile 2	100	107	1.1	0.8, 1.7	
Quartile 3	112	125	1.1	0.7, 1.7	
Quartile 4	104	70	2.1	1.4, 3.3	0.003
<b>Combined air freshener use (sprays and solids)</b>					
Quartile 1	74	77	1.0	Reference	
Quartile 2	113	117	1.1	0.7, 1.7	
Quartile 3	123	138	1.0	0.7, 1.6	
Quartile 4	101	71	1.9	1.2, 3.0	0.02
<b>Air freshener spray</b>					
Never use	90	95	1.0	Reference	
Any use	322	308	1.2	0.9, 1.8	
< Once a month	83	88	1.1	0.7, 1.7	
Monthly	47	41	1.3	0.8, 2.3	
Weekly	114	110	1.3	0.8, 1.9	
Daily	78	69	1.3	0.8, 2.1	0.15
<b>Solid air freshener</b>					
Never use	259	288	1.0	Reference	
Any use	153	115	1.7	1.2, 2.3	
<2 times/year	50	41	1.4	0.9, 2.2	
2-6 times/year	77	58	1.7	1.2, 2.6	
≥7 times/year	26	16	2.0	1.0, 4.0	0.001
<b>Oven cleaner</b>					
Never use	33	33	1.0	Reference	
Any use	379	370	1.0	0.6, 1.7	
<2 times/year	145	143	1.0	0.6, 1.8	
2-6 times/year	199	196	1.0	0.6, 1.7	
≥7 times/year	35	31	1.2	0.6, 2.3	0.80
<b>Surface cleaner</b>					
Never use	53	54	1.0	Reference	
Any use	359	348	1.1	0.7, 1.7	
< Once a month	61	60	1.0	0.6, 1.6	
Monthly	57	57	1.0	0.6, 1.8	
Weekly	186	171	1.2	0.8, 1.9	
Daily	55	60	1.2	0.7, 2.2	0.22

Mold/mildew control					
Never use	296	322	1.0	Reference	
Any use	114	81	1.7	1.2, 2.3	
Mold/mildew control with bleach					
Never use	320	334	1.0	Reference	
Any use	90	68	1.5	1.0, 2.1	
< Once a month	47	38	1.2	0.8, 2.0	
Monthly	14	11	1.5	0.7, 3.5	
≥ Weekly	29	19	2.0	1.1, 3.8	0.02

Odds ratios are adjusted for age at diagnosis/reference year, birth decade ([six6](#) categories), previous breast cancer diagnosis, family history of breast cancer, age at first live or still birth (<30, ≥30/nulliparous), education ([five5](#) categories). "Combined cleaning product use" combines frequency of use across [five5](#) product categories: air freshener spray, solid air freshener, oven cleaner, surface cleaner, and mold/mildew control with bleach.

**Table 3– Adjusted odds ratios for breast cancer and residential pesticide use, Cape Cod, Massachusetts, 1988-1995**

Product category	Cases (no.)	Controls (no.)	Adjusted OR	(95% CI)	<i>P</i> <sub>trend</sub>
<b>Combined pesticide use</b>					
Quartile 1	173	152	1.0	Reference	
Quartile 2	110	99	1.0	0.7, 1.5	
Quartile 3	169	143	1.1	0.8, 1.5	
Quartile 4	153	126	1.1	0.8, 1.6	0.52
<b>Insect or bug control</b>					
Never use	161	151	1.0	Reference	
Any use	569	514	1.1	0.9, 1.4	
Once or twice	161	155	1.0	0.7, 1.4	
3-10 times	203	188	1.1	0.8, 1.5	
> 10 times	205	171	1.2	0.8, 1.6	0.21
<b>Termite or carpenter ant control</b>					
Never use	293	265	1.0	Reference	
Any use	165	161	0.9	0.6, 1.2	
Once or twice	105	85	1.0	0.7, 1.5	
3-10 times	35	49	0.6	0.4, 1.0	
> 10 times	25	27	0.8	0.4, 1.4	0.11
<b>Mosquito control</b>					
Never use	314	312	1.0	Reference	
Any use	91	87	1.0	0.7, 1.5	
Once or twice	15	18	0.9	0.5, 1.9	
3-10 times	35	31	1.1	0.7, 1.9	
> 10 times	41	38	1.0	0.6, 1.7	0.79
<b>Mothball control</b>					
Never use	73	91	1.0	Reference	
Any use	340	312	1.2	0.8, 1.7	
< 5 times	92	90	1.2	0.8, 1.9	
5-10 times	62	73	0.9	0.6, 1.5	
> 10 times	186	149	1.3	0.9, 1.9	0.29

Lawn care					
Never use	316	286	1.0	Reference	
Any use	408	343	1.1	0.9, 1.3	
Once or twice	43	35	1.2	0.7, 1.9	
3-20 times	174	136	1.2	0.9, 1.6	
> 20 times	191	172	1.0	0.7, 1.3	0.88
Outdoor and indoor plant care					
Never use	407	359	1.0	Reference	
Any use	334	300	1.0	0.8, 1.2	
Once or twice	33	26	1.1	0.6, 1.8	
3-20 times	158	146	1.0	0.7, 1.3	
> 20 times	143	128	1.0	0.7, 1.3	0.71
Insect repellent					
Never use	286	271	1.0	Reference	
Any use	482	428	1.2	0.9, 1.5	
Rarely	283	263	1.1	0.9, 1.5	
Sometimes	133	115	1.2	0.9, 1.7	
Often/Very often	66	50	1.5	1.0, 2.3	0.05
Lice control					
Never use	692	626	1.0	Reference	
Any use	89	83	1.2	0.8, 1.6	
Flea collar for pets					
No	257	238	1.0	Reference	
Yes	529	482	1.2	0.9, 1.5	
Flea control for pets					
Never use	465	395	1.0	Reference	
Any use	294	286	1.0	0.8, 1.2	
Once or twice	43	41	0.9	0.6, 1.5	
3-10 times	101	109	0.9	0.6, 1.2	
> 10 times	150	136	1.1	0.8, 1.4	0.95

Odds ratios are adjusted for age at diagnosis/reference year, birth decade (six categories), previous breast cancer diagnosis, family history of breast cancer, age at first live or still birth (<30, ≥30/nulliparous), education (five categories), study (Cape, PCE). "Combined pesticide use" product category includes frequency data for: insect or bug control, lawn care, outdoor and indoor plant care, insect repellent, flea control on pets. Product use for termite or carpenter ant control, mosquito control, and mothball control not included because they were only assessed in study participants from the 1999-2000 interviews.

|

|

**Table 4— Beliefs about the causes of breast cancer by case status, Cape Cod, Massachusetts, 1988-1995**

How much does ... contribute to breast cancer?		Cases		Controls	
		No.	%	No.	%
Heredity	A lot	331	42	474	66 **
	A little	295	37	163	23
	Not at all	99	13	36	5
	Don't know	62	8	48	7
Diet	A lot	217	28	205	28
	A little	327	42	294	41
	Not at all	160	20	125	17
	Don't know	83	11	97	13
Chemicals and pollutants in the air or water	A lot	476	60	412	57 *
	A little	188	24	203	28
	Not at all	53	7	31	4
	Don't know	70	9	75	10
Women's reproductive or breast feeding history	A lot	67	9	70	10
	A little	262	33	261	36
	Not at all	245	31	225	31
	Don't know	213	27	165	23

Percentages may not add to 100% because of rounding. Two-sided P value calculated using chi square test; \* indicates P<0.05 and \*\* indicates P<0.001.

**Table 5– Adjusted odds ratios for breast cancer and cleaning product use stratified by disease causation beliefs**

Beliefs about environmental chemicals/pollutants and breast cancer										
Product category	Contributes “a lot”					Does not contribute “a lot”				
	Cases (no.)	Controls (no.)	Adj. OR	95% CI	<i>P</i> <sub>trend</sub>	Cases (no.)	Controls (no.)	Adj. OR	95% CI	<i>P</i> <sub>trend</sub>
<b>Combined cleaning product use</b>										
Quartile 1	39	55	1.0	Ref.		52	44	1.0	Ref.	
Quartile 2)	58	69	1.4	0.8, 2.4		42	38	0.9	0.5, 1.8	
Quartile 3	71	74	1.6	0.9, 2.8		41	51	0.8	0.4, 1.4	
Quartile 4	77	47	3.2	1.8, 5.9	0.0001	27	23	1.2	0.6, 2.6	0.96
<b>Combined air freshener use (sprays and solids)</b>										
Quartile 1	34	43	1.0	Ref.		40	34	1.0	Ref.	
Quartile 2	67	71	1.3	0.7, 2.4		46	46	0.9	0.5, 1.7	
Quartile 3	76	86	1.3	0.7, 2.2		47	52	0.8	0.4, 1.6	
Quartile 4	69	46	2.4	1.3, 4.5	0.01	32	25	1.4	0.7, 3.0	0.53
<b>Air freshener spray</b>										
Never use	44	50	1.0	Ref.		46	45	1.0	Ref.	
Any use	203	196	1.3	0.8, 2.1		119	112	1.2	0.7, 2.0	
< Once a month	50	57	1.1	0.6, 2.0		33	31	1.1	0.6, 2.2	
Monthly	32	32	1.2	0.6, 2.3		15	9	1.9	0.7, 5.0	
Weekly	71	62	1.5	0.8, 2.6		43	48	1.0	0.6, 2.0	
Daily	50	45	1.4	0.8, 2.7	0.12	28	24	1.2	0.6, 2.6	0.66
<b>Solid air freshener</b>										
Never use	144	174	1.0	Ref.		115	114	1.0	Ref.	
Any use	102	72	1.9	1.3, 2.9		51	43	1.4	0.8, 2.3	
<2/year	27	28	1.3	0.7, 2.3		23	13	1.9	0.9, 4.1	
2-6/year	58	32	2.6	1.6, 4.4		19	26	0.9	0.4, 1.8	
≥7/year	17	12	1.7	0.8, 3.9	0.0007	9	4	2.8	0.8, 10.2	0.31
<b>Oven cleaner</b>										
Never use	11	19	1.0	Ref.		22	14	1.0	Ref.	
Any use	236	227	1.8	0.8, 4.0		143	143	0.6	0.3, 1.2	
<2/year	96	86	2.0	0.9, 4.6		49	57	0.4	0.1, 1.3	
2-6/year	112	121	1.5	0.6, 3.4		87	75	0.7	0.3, 1.5	
≥7/year	28	20	2.4	0.9, 6.5	0.58	7	11	0.4	0.1, 1.3	0.73
<b>Surface cleaner</b>										
Never use	29	36	1.0	Ref.		24	18	1.0	Ref.	
Any use	218	209	1.5	0.9, 2.7		141	139	0.7	0.4, 1.5	
< Once a month	23	30	0.9	0.4, 1.9		38	30	0.9	0.4, 2.0	
Monthly	39	36	1.5	0.7, 3.1		18	21	0.6	0.2, 1.4	
Weekly	120	103	1.7	1.0, 3.0		66	68	0.7	0.3, 1.5	
Daily	36	40	1.7	0.8, 3.6	0.02	19	20	0.8	0.3, 2.1	0.45

Mold/mildew control									
Never use	166	197	1.0	Ref.		130	125	1.0	Ref.
Any use	80	49	2.1	1.4, 3.3		34	32	1.1	0.6, 2.0
Mold/mildew control with bleach									
Never use	179	202	1.0	Ref.		141	132	1.0	Ref.
Any use	67	44	1.8	1.2, 2.9		23	24	1.0	0.5, 2.0
< Once a month	33	25	1.4	0.8, 2.5		14	13	1.1	0.5, 2.4
Monthly	10	7	1.8	0.6, 5.1		4	4	1.1	0.3, 4.7
≥ Weekly	24	12	3.2	1.4, 7.1	0.002	5	7	0.8	0.2, 2.7 0.83

Odds ratios are adjusted for age at diagnosis/reference year, birth decade ([six6](#) categories), previous breast cancer diagnosis, family history of breast cancer, age at first live or still birth (<30, ≥30/nulliparous), education ([five5](#) categories). “Combined cleaning product use” product category combines frequency of use across [five5](#) product categories: air freshener spray, solid air freshener, oven cleaner, surface cleaner, and mold/mildew control with bleach.

**Table 6– Adjusted odds ratios for breast cancer and residential pesticide use stratified by disease causation beliefs**

Beliefs about environmental chemicals/pollutants and breast cancer										
Product category	Contributes “a lot”					Does not contribute “a lot”				
	Cases (no.)	Controls (no.)	Adj. OR	95% CI	P <sub>trend</sub>	Cases (no.)	Controls (no.)	Adj. OR	95% CI	P <sub>trend</sub>
<b>Combined pesticide use</b>										
Quartile 1	91	87	1.0	Ref.		82	65	1.0	Ref.	
Quartile 2	66	47	1.5	0.9, 2.5		44	52	0.7	0.4, 1.1	
Quartile 3	104	89	1.2	0.8, 1.9		65	54	1.0	0.6, 1.7	
Quartile 4	106	75	1.5	1.0, 2.4	0.16	47	51	0.7	0.4, 1.3	0.53
<b>Insect or bug control</b>										
Never use	81	78	1.0	Ref.		80	73	1.0	Ref.	
Any use	367	305	1.2	0.9, 1.8		202	209	0.9	0.6, 1.3	
Once or twice	105	90	1.1	0.7, 1.8		56	65	0.8	0.5, 1.3	
3-10 times	130	117	1.1	0.8, 1.7		73	71	1.0	0.6, 1.6	
> 10 times	132	98	1.4	0.9, 2.1	0.12	73	73	0.9	0.6, 1.4	0.86
<b>Termites / carpenter ants</b>										
Never use	161	146	1.0	Ref.		132	119	1.0	Ref.	
Any use	112	102	1.0	0.7, 1.4		53	59	0.7	0.4, 1.1	
Once or twice	68	54	1.1	0.7, 1.7		37	31	1.0	0.5, 1.7	
3-10 times	28	30	0.9	0.5, 1.6		7	19	0.2	0.1, 0.6	
> 10 times	16	18	0.8	0.4, 1.7	0.55	9	9	0.7	0.3, 2.1	0.06
<b>Mosquito control</b>										
Never use	176	186	1.0	Ref.		138	126	1.0	Ref.	
Any use	65	58	1.1	0.7, 1.7		26	29	0.8	0.4, 1.4	
Once or twice	10	11	1.2	0.7, 2.2		5	7	0.7	0.2, 2.3	
3-10 times	23	22	1.1	0.6, 2.1		12	9	1.2	0.5, 3.2	
> 10 times	32	25	1.2	0.7, 2.2	0.47	9	13	0.5	0.2, 1.4	0.33
<b>Mothball control</b>										
Never use	40	56	1.0	Ref.		33	35	1.0	Ref.	
Any use	207	190	1.3	0.8, 2.1		133	122	1.0	0.6, 1.8	
< 5 times	50	55	1.2	0.7, 2.1		42	35	1.3	0.7, 2.7	
5-10 times	40	53	1.0	0.5, 1.8		22	20	0.9	0.4, 2.0	
> 10 times	117	82	1.6	1.0, 2.8	0.06	69	67	0.9	0.5, 1.7	0.41
<b>Lawn care</b>										
Never use	190	169	1.0	Ref.		126	117	1.0	Ref.	
Any use	250	196	1.1	0.8, 1.5		158	147	1.1	0.8, 1.5	
Once or twice	24	21	1.0	0.5, 2.0		19	14	1.4	0.7, 3.0	
3-20 times	115	83	1.2	0.8, 1.7		59	53	1.1	0.7, 1.8	
> 20 times	111	92	1.0	0.7, 1.5	0.58	80	80	1.0	0.6, 1.5	0.98

Outdoor and indoor plant care										
Never use	235	198	1.0	Ref.		172	161	1.0	Ref.	
Any use	214	173	1.0	0.8, 1.4		120	127	0.8	0.6, 1.2	
Once or twice	18	12	1.2	0.5, 2.6		15	14	0.9	0.4, 2.0	
3-20 times	104	86	1.0	0.7, 1.5		54	60	0.8	0.5, 1.2	
> 20 times	92	75	1.0	0.7, 1.4	0.99	51	53	0.9	0.5, 1.4	0.39
Insect repellent										
Never use	153	134	1.0	Ref.		133	137	1.0	Ref.	
Any use	312	261	1.2	0.9, 1.6		170	167	1.2	0.8, 1.7	
Rarely	179	149	1.2	0.8, 1.6		104	114	1.1	0.7, 1.6	
Sometimes	85	85	1.0	0.6, 1.5		48	30	1.9	1.1, 3.4	
Often/Very often	48	27	2.0	1.1, 3.4	0.12	18	23	0.8	0.4, 1.6	0.45
Lice control										
Never use	414	344	1.0	Ref.		278	282	1.0	Ref.	
Any use	59	58	1.1	0.7, 1.7		30	25	1.4	0.8, 2.5	
Flea collar for pets										
No	132	122	1.0	Ref.		125	116	1.0	Ref.	
Yes	344	290	1.3	0.9, 1.8		185	192	1.0	0.7, 1.4	
Flea control for pets										
Never use	256	214	1.0	Ref.		209	181	1.0	Ref.	
Any use	196	177	1.1	0.8, 1.4		98	109	0.8	0.5, 1.1	
Once or twice	23	23	0.9	0.5, 1.6		20	18	1.0	0.5, 2.1	
3-10 times	63	74	0.8	0.5, 1.2		38	35	0.9	0.6, 1.6	
> 10 times	110	80	1.4	0.9, 2.0	0.27	40	56	0.6	0.4, 1.0	0.07

Odds ratios are adjusted for age at diagnosis/reference year, birth decade ([six6](#) categories), previous breast cancer diagnosis, family history of breast cancer, age at first live or still birth (<30, ≥30/nulliparous), education ([five5](#) categories), study (Cape, PCE). "Combined pesticide use" product category includes frequency data for: insect or bug control, lawn care, outdoor and indoor plant care, insect repellent, flea control on pets. Product use for termite or carpenter ant control, mosquito control, and mothball control not included because they were only assessed in study participants from the 1999-2000 interviews.

**Table 7-- Beliefs about heredity as a cause of breast cancer by family history and case status**

Belief	Cases				Controls				
	Family history of breast cancer				Family history of breast cancer				
	Yes		No		Yes		No		
	N	%	N	%	N	%	N	%	
Heredity contributes "a lot" to breast cancer	Yes	120	61	211	36	83	61	391	67
	No	76	39	380	64	52	39	195	33

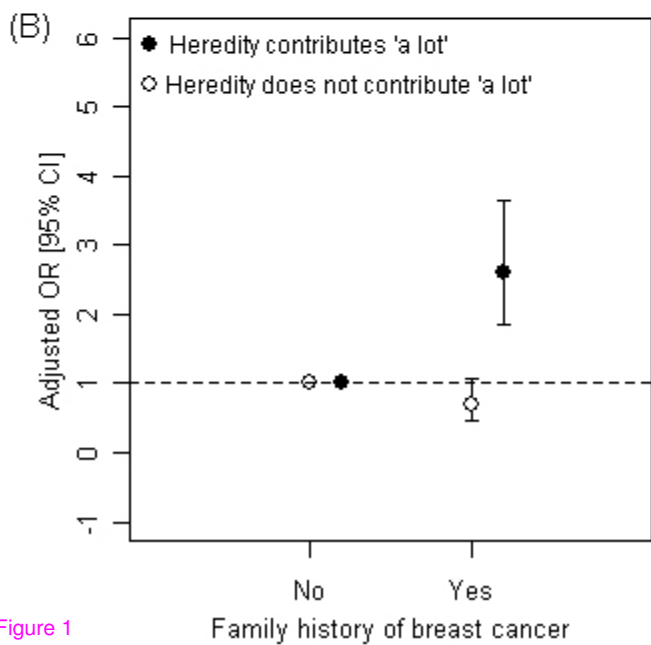
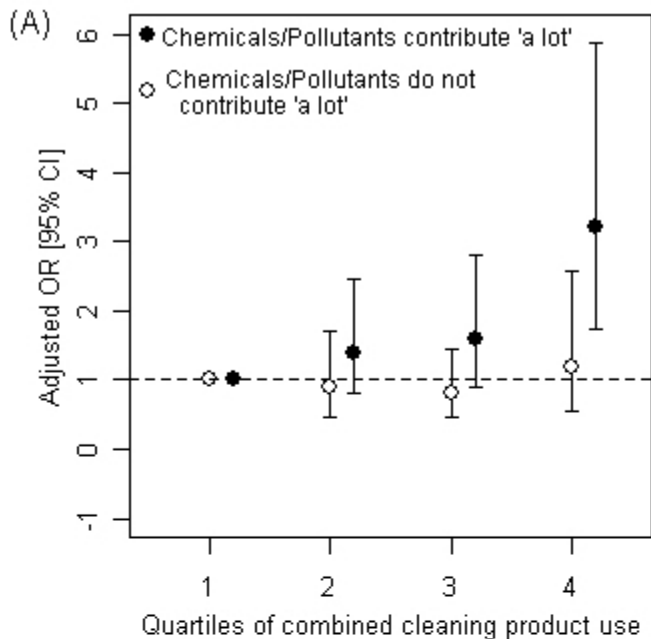


Figure 1