

Relationship between dialkylphosphate metabolites of organophosphates and seminal quality in pesticide applicators in Majes-Arequipa, Peru: a cross sectional study

Sandra Yucra^{*1,2}, Manuel Gasco^{1,2}, Julio Rubio^{1,2}, Carla Gonzales¹, Gustavo F. Gonzales^{1,2}

¹Department of Biological and Physiological Sciences, Faculty of Sciences and Philosophy. Universidad Peruana Cayetano Heredia.

²Instituto de Investigaciones de la Altura, Universidad Peruana Cayetano Heredia. Fax (00-51-1)-4821195 P.O. Box 1843, Lima (Peru).

*Corresponding author:

E-mail addresses:

SY: 23411@upch.edu.pe

MG: 05931@upch.edu.pe

JR: 09008@upch.edu.pe

CG: carlagonzales@hotmail.com

GGR: ggr@upch.edu.pe

Abstract

Background

Organophosphates are broad class of chemicals widely used as pesticides throughout the world. We performed a cross-sectional study of associations between dialkylphosphate metabolites of organophosphates and seminal quality among Peruvian pesticide applicators of organophosphates pesticide from Majes (Arequipa), Perú.

Methods

31 men exposed to organophosphate (OPs) pesticides and 31 non-exposed were recruited (age 20-60 years). In exposed subjects, semen and a blood sample were obtained one day after the last pesticide application. Subjects were grouped according levels of OP metabolites in urine. Semen samples were analyzed for sperm concentration, percentage of sperm motility, percentage of normal morphology, semen leucocytes and measurements of fructose and zinc concentrations. Exposure to OPs was assessed by measuring six urinary OPs metabolites (DMP, DMTP, DMDTP, DEP, DETP, and DEDTP) by gas chromatography using a single flame photometric detector.

Results

DEDTP ($p=0.04$) and DETP ($p=0.02$) were more related to occupational exposure than other OPs metabolites. Semen analysis revealed a significant reduction of seminal volume and an increase in seminal pH in men with OPs metabolites. Multiple regression analysis showed that both occupational exposure to pesticides and time of exposure to pesticides were more related to alteration in several seminal parameters than measurement of OPs metabolites in urine.

Conclusion

This study demonstrates that occupational exposure to OPs pesticides may have an adverse effect on semen quality, and that measurement of acute exposure may not be a good marker of the chronic exposure to OPs.

Background

A wide variety of synthetic chemicals are found in the environment as a consequence of modern manufacturing processes and agricultural productivity efforts [1]. Agriculture is an important activity and source of economic income in many parts of the world, especially in developing countries.

Organophosphate (OPs) pesticides are the most commonly used pesticides in Peruvian agriculture. The population at risk for OPs exposure includes formulators, applicators and farmers [2]. One of the problems in the use of this kind of pesticides is the inadequate protection during pesticide application [2-3].

Exposure to OPs causes neurologic dysfunctions that include central and peripheral neurologic symptoms [4-8]. Also, these chemicals have numerous other compound specific effects, including those occurring in the reproductive system [4, 9-10].

However, there are conflicting results on the effects that of OPs exposure has on semen quality. Emerging evidence suggests that it may reduce semen quality in exposed workers [6-7, 5, 11].

Sánchez-Peña et al observed, in Mexican agricultural workers, that OPs exposure alters sperm chromatin condensation, increasing the number of cells with greater susceptibility to DNA denaturalization [12]. Other authors suggested that OPs exposure could interfere with sperm chromosome segregation and increase the risk for genetic syndromes [13]. However, other studies did not find any relation between changes in sperm parameters and pesticide exposure variables [14-15]. Differences seem to be due at least in part to the quality of protective measures when facing OPs pesticides exposure.

Studies on serum hormone levels are also conflicting [16-18, 14-15]. Experimental studies in laboratory animals described an anti-androgenic activity for two OPs pesticides: Fenitrothion [19] and Chlorpyrifos-methyl [20].

Peruvian pesticide sprayer applicators in Majes, Arequipa, had significantly reduced age-adjusted seminal volume, percentage of motility, percentage of sperm with normal morphology, serum luteinizing hormone, serum testosterone levels, and seminal zinc

concentration (a marker of prostate function). They also showed significantly increased time of liquefaction, seminal pH, percentage of immature sperm morphology, and leukocyte concentration. Use of pesticide sprayers were characterized by inadequate practice of safety measures [2]. These findings provided evidence that occupational exposure to OP pesticides adversely affects semen quality and sex hormones [11]. However, OPs metabolites were not measured in this study.

In order to determine the association, if any, between OPs and semen quality, we attempted to correlate seminal quality with three ethylated and three methylated OPs metabolites measured in the urine of pesticide sprayer users from the Majes valley, a farm region in southern of Peru. Concentrations of urine OPs metabolites were related to each semen parameter.

Methods

Reagents

The standards of Dimethylphosphate (DMP) (100% purity), Dimethylthiophosphate (DMTP) (99% purity), Dimethyldithiophosphate (DMDTP) (98% purity), Diethylphosphate (DEP) (98.3% purity), Diethylthiophosphate (DETP) (99% purity), and Diethyldithiophosphate (DEDTP) (99% purity) were obtained from (Cerilliant Corporation, TX, USA). Benzyltolyltriazine, cyclohexane and methanol were purchased from Sigma (Sigma-Aldrich Inc., Steinheim, Germany). All other chemicals were high grade from commercial sources.

Testosterone (T), estradiol (E2), follicle stimulating hormone (FSH), and luteinizing hormone (LH) assay kits were obtained from (Diagnostic Products Co., Los Angeles, CA, USA). A commercial kit for zinc determination was obtained from RANDOX (RANDOX Laboratories, United Kingdom).

Study design

A cross-sectional study was performed, based on interviews and collection of semen and blood samples from 31 OPs pesticide applicators (exposed group) and 31 non-exposed individuals. Inclusion criteria for subjects of the exposed group included history of work with pesticides and length of residence in Majes for at least two years

before the study. The age of subjects ranged from 20 to 60 years old. Subjects in control group were included in the study if: they had not ever worked as pesticide applicators; they were not currently exposed to pesticides either occupationally or non-occupationally.

Subjects in both groups were not sick at the time of the study; they had not taken any medication for at least three months before the study and had lived at least two years in Majes.

Regarding control group selection, some exposed subjects were asked to recruit a male friend without any exposure to OPs or agricultural activity. Also, healthy men who responded to an announcement in the medical center, hotel, or municipality were invited to participate in the study. Subjects from the medical center were staff members. All subjects in the non-exposed group had lived at least two years in Majes.

The study was approved by the Institutional Review Board (IRB) of Universidad Peruana Cayetano Heredia, Lima-Peru. A signed informed consent was obtained from each study participant.

Study area

Majes is an agricultural area located in Caylloma, Arequipa. It is one of the main agricultural production areas in the Southern part of Peru. It is situated at 1420 m. above sea level. Its temperate climate makes agricultural production possible almost all the year. OP pesticides are used on a variety of crops including potatoes, alfalfa, onions, tomatoes, garlic, apples and grapes. Methamidophos is the most frequently used OP pesticide in the Majes valley [2].

Recruitment of study population

Pesticide applicators eligible for participating in the study were identified and recruited by agronomic engineers working in Majes Valley. From the universe of applicators in Majes (150 pesticide applicators), 64 accepted to participate in the study. Of these, 31 fulfilled the inclusion criteria, which were : i) To be working as a pesticide applicator for at least 2 years; ii) To have used pesticides within a week before the questionnaire

application and semen sample analysis. Data from questionnaire, and blood and semen samples were collected one day after the last pesticide use reported.

Questionnaire

The questionnaire was administered to each pesticide applicator to obtain information on sociodemographic characteristics; agricultural work practices, and knowledge and practice of safety guidelines for pesticide use.

Applicators were asked to define how frequently they use OPs pesticides. Data related to the kind of pesticides used, protective measures practiced during application, and management of pesticides and clothes after pesticide application were also recorded.

Semen collection and Analysis

All participating subjects were asked to abstain from ejaculation for 3 to 5 days before semen collection. Information on date, time, spillage, occurrence of fever, and number of days since last ejaculation was recorded for each sample. The semen was collected by masturbation in a private room and analyzed on-site within one hour for both macroscopic and microscopic characteristics. Also, seminal fructose, true-corrected fructose, and zinc levels were determined [21].

Semen analysis was performed according to the protocol described in the WHO laboratory manual for the examination of human semen and sperm-cervical mucus interaction. Semen analysis included: liquefaction time, seminal volume, pH, sperm concentration, total sperm number (sperm concentration x seminal volume), sperm morphology, sperm motility, sperm viability and concentration of leukocyte determined by peroxidase staining using orthotoluidine blue method [22]. A Neubauer improved bright-line hemacytometer (Marienfeld Laboratories, Germany) was used to determine sperm and leukocyte concentrations.

Morphology describes the shape of the sperm (including the head, neck, midpiece and tail) and is expressed as the percentage of sperm that meet “normal” morphology criteria defined by the WHO. Sperm morphology was evaluated microscopically. A smear from the fresh semen sample was stained with Giemsa in order to view and count the number of normal and abnormal spermatozoa until at least 200 consecutive

spermatozoa were evaluated. Generally, the normal value for sperm morphology is at least 30% [22]

Additionally, the concentration of zinc in seminal plasma was determined by spectrophotometric method using a commercial kit (RANDOX Laboratories, United Kingdom). The proteins in the sample were precipitated with trichloroacetic acid, the supernatant mixed with a water-soluble pyridylazo dye and the absorbance measured at 560 nm. Also, fructose was measured in semen using a spectrophotometric method.

True-corrected fructose is calculated by multiplying the log of motile sperm concentration by the seminal fructose concentration [23]. Although true-corrected fructose is not included in the WHO manual, previous studies have demonstrated that true-corrected fructose is a better marker of seminal vesicle function [24].

Time of liquefaction was measured as the time in minutes it took for the semen specimen to liquefy. Fresh ejaculated human semen is coagulated however due to proteolytic enzymes present in the prostatic secretions, the semen will liquefy. If liquefaction is not complete, the examiner may observe gel particles or mucous streaks. According to the WHO, a semen sample typically liquefies within 15 minutes at room temperature however the normal range extends to 60 minutes [22]

Volume was also assessed macroscopically. The volume of ejaculate was measured in milliliters using a graduated cylinder. The normal or reference value for volume of ejaculate is considered to be 2 milliliters or more by WHO standards [22]. Morphology describes the shape of the sperm (including the head, neck, midpiece and tail) and is expressed as the percentage of sperm that meet “normal” morphology criteria defined by the WHO. Sperm morphology was evaluated microscopically. A smear from the fresh semen sample was stained with Giemsa in order to view and count the number of normal and abnormal spermatozoa until at least 200 consecutive spermatozoa were evaluated. Generally, the normal value for sperm morphology is at least 30% [22].

Viability measures the percentage of sperm that are alive because it is possible that sperm may be alive but not moving. Sperm viability was assessed using an Eosin dye. Under the microscope, the examiner was able to differentiate the live (unstained) sperm

from the dead (stained) sperm and calculate the percentage of viable sperm. The reference value for sperm viability is 75% [22]. Sperm motility was also analyzed microscopically. Motility describes the percentage of sperm that are moving.

Using an unstained sample of fresh semen, the number of motile sperm was counted until a total of 200 spermatozoa were assessed. The procedure was conducted twice to improve accuracy of the measurement. Motility is classified in four categories:

- (a) If sperm has a rapid and linear movement,
- (b) If sperm has a slow or sluggish linear or non-linear movement,
- (c) If it has a non-progressive motility,
- (d) If sperm is immotile,

According to the WHO, 50% or greater motility grades a and b or 25% or greater sperms grade a are considered normal [22]. Sperm concentration or density, sometimes referred to as the “count,” is a measurement of millions of sperm in each milliliter of fluid. Looking at a diluted semen sample under the microscope, the examiner counted the number of spermatozoa in a defined field of view. The procedure was repeated to ensure accuracy and a conversion factor was used to calculate the concentration. The normal sperm concentration value is at least 20 million spermatozoa per milliliter [22]

Knowing the sperm concentration and volume, the total number of sperm in the ejaculate was calculated (sperm concentration x volume = total number of sperm). Total number of sperm is expressed in millions of spermatozoa per ejaculate. The reference value for total sperm number is at least 40 million spermatozoa per ejaculate [22].

Fructose is a compound secreted by the seminal vesicles. Measurement of seminal fructose used universally as a marker of the seminal vesicle function is not an appropriate approach due to its inverse relationship with the sperm count. The true corrected fructose defined as [log. motile sperm concentration] multiplied by [seminal fructose concentration] has been shown to be a better marker of the seminal vesicle function [25].

Zinc is a marker of prostate function [11]. Low zinc concentration associated to high pH is associated to low prostatic secretion. [21].

Leukocytes in semen were measured with peroxidase stain using ortholuidine blue as suggested by WHO. The percentage of peroxidase positive neutrophils was recorded. Leukocytospermia is diagnosed if semen sample has more than 1 million of leukocytes peroxidase positive [22]. All seminal analyses were performed by duplicate by the same investigator who was not did not know about the characteristics of the subjects.

Blood collection and reproductive hormones assay

Venous blood samples were obtained after a 12-h overnight fast. Blood was centrifuged at 1000 g, and serum was collected after centrifugation and kept frozen until assayed for serum testosterone, estradiol, follicle stimulating hormone (FSH), and luteinizing hormone (LH) concentrations.

Testosterone (T) and estradiol (E2) concentrations were determined by radioimmunoassay (RIA) using ¹²⁵I-labeled testosterone and ¹²⁵I-labeled estradiol, respectively, as radioactive markers. The assays were performed using commercially available kits (Diagnostic Products Co., Los Angeles, CA, USA). All samples were run in the same assay. The within-assay variation was 5.5% for testosterone and 6.4% for estradiol. The level of detection of the testosterone and estradiol assays was 0.04 ng/ml and 8.0 pg/ml respectively.

Serum FSH and LH levels were measured by immunoradiometric assay (IRMA) in solid phase using commercially available kits (Diagnostic Products Co, Los Angeles, CA, USA). Within-assay variation was 2.9% for FSH and 1.3% for LH. The sensitivity of the assays was 0.06 mIU/ml for FSH, and 0.15 mIU/ml for LH.

Urine collection, storage and organophosphate determination

One day after applying OPs pesticides, each worker was provided with one polyethylene urine collection bottle and instructed to collect a urine sample. For this purpose, the first void in the morning was collected. All the collected urine samples were immediately placed inside a plastic container with ice and transported to the medical center for freezing at -20o C. The time between urine collection and freezing was 10-15 minutes. After collection was completed, all samples were shipped frozen to Pacific Toxicology Laboratories (Los Angeles, California U.S.A) where the following

metabolites of organophosphates were measured: DMP, DMTP, DMDTP, DEP, DETP and DEDTP. All urine samples were stored at -20°C until extraction. Urine pH was not adjusted prior to freezing.

For extraction, freeze-dried urine samples were treated with a benzyltolyltriazine reagent to produce benzyl derivatives of alkylphosphate metabolites. A saturated salt solution was added to the tubes and the benzyl derivatives were extracted with cyclohexane and analyzed by gas chromatography with flame photometric detection [26].

Likewise, the quality control was made in-house by spiking normal urine sample. We run 2 levels of in-house made urine controls. The assay was run with a reagent water blank and urine blank. The recovery rate ranged from 80 to 120 % of expected value. R^2 (Coefficient of determination) correlation data of methylated and ethylated samples were: (DMP=0.998), (DMTP=0.999), (DMDTP=0.999), (DEP=0.995), (DETP=0.999), and (DEDTP=0.999). Calibration curves are shown in the Figure 1A y 1B.

The limit of detection was 5µg/l for DMP, DEP, DETP and DMTP, and 10µg/l for DEDTP and DMDTP. Creatinine was also measured in the urine samples by a colorimetric method (Creatinine Procedure No 555; Sigma Diagnostics, St Louis, Mo). Its measurement was used to adjust results of OP metabolites (ug/gram creatinine) to avoid the variable dilution caused by the different hydration states of the sample donor.

Data analysis

Data recorded in the questionnaires, semen and serum samples were introduced in an Excel database. Statistical analysis was performed using the statistical package STATA (version 8.0) for personal computer (Stata Corporation, 702 University Drive East, College Station, TX, USA). Descriptive data were presented as mean ± standard deviation (SD), as well as frequencies. The percentage of subjects with detected OPs metabolites in urine (percentage of samples above detection limit for each analyte) was also calculated. Many urine samples had concentrations below detection limits for some metabolites.

For the dialkylphosphates metabolites the samples below the respective limit of detection (LOD) were assigned to have concentrations equal to one-half the LOD for statistical analyses as used by others in a previous report [27].

The influence of the variables was evaluated for single alkylphosphates and for the sum of dimethyl (DMP + DMTP + DMDTP), diethyl (DEP + DETP + DEDTP). We named these sums methylated, and ethylated OPs metabolites, respectively. To calculate these sums, analytes below the detection limit were counted as a value half the detection limit.

Statistical analysis of the samples was then carried out, including a value half the detection limit for non detectable analytes. We used the Kolmogorov-Smirnov test to check the distribution of samples for the six alkylphosphates; we found a positive asymmetric distribution, which became normal after log transformation. Parametric analysis (multiple regressions) was therefore used for subsequent comparisons. We used the Bonferroni/Dunn post hoc test (multiple comparisons) to examine whether the mean values of the dependent variables were different from each other for each level of the factors. Statistical significance was set at $P < 0.05$.

Homogeneity of variances was assessed using the Barlett test. Variables that were not normally distributed (corrected fructose, seminal zinc, sperm/ml, sperm/ejaculum, motility grade a, a+b, seminal leukocytes, serum levels of estradiol, FSH, LH, T/E2 and T/LH) were transformed. Student's t test was used to compare mean between groups.

Multivariate regression analyses were performed to explore the relationship between the following dependent variables: OPs metabolites levels (methylated and ethylated), time of exposure (hours worked as a pesticide applicator) and toxicity (related to the severity degree of OPs pesticide used) with respect to each of the semen parameters or hormone levels as dependent variables. Each multivariate regression analyses were controlled for age and alcohol consumption.

Results

Data in Table 1 show that DEDTP ($p=0.04$) and DETP ($p=0.02$) were more related to occupational exposure than other OPs metabolites. In fact, DEP, DMP, DMDTP and DMTP were present in the same proportion in exposed and non-exposed men.

Men with ethylated OPs metabolites in their urine had lower seminal volume than those without ethylated OPs metabolites ($p=0.04$). Men with methylated OPs metabolites had higher seminal pH than men without detected methylated OPs metabolites ($p=0.01$). (Data not show). Furthermore, ethylated metabolites of OPs were associated to low seminal volume ($p=0.02$) and the Methylated metabolites of OPs were associated to high seminal pH ($p=0.02$) data not show.

After controlling for urine levels of ethylated OPs metabolites, the exposure to pesticides (yes or not) was related to low seminal volume ($p=0.03$), high seminal pH ($p=0.002$), low percent of sperm with normal morphology ($p=0.001$), and high concentration of seminal leucocytes ($p=0.0001$) (Table 2).

After regressing time of exposure to pesticides (months), lower seminal vesicles function (low seminal corrected fructose levels) ($p=0.01$), low percent of normal sperm morphology ($p=0.02$), high serum estradiol levels ($p=0.03$), low serum LH levels ($p=0.01$), low ratio testosterone/estradiol ($p=0.009$) and high ratio testosterone/LH ($p=0.01$) were observed (Table 2).

After controlling for urine levels of ethylated OPs metabolites, exposure to pesticide was related to low seminal volume ($p=0.02$), high seminal pH ($p=0.01$), low seminal vesicles function ($p=0.05$), low percent of sperm with normal morphology ($p=0.002$), high concentration of seminal leucocytes ($p=0.0001$) and low levels of serum LH ($p=0.05$) (Table 3).

After regressing time of exposure to pesticides, high seminal pH ($p=0.05$), low seminal vesicles function (low seminal corrected fructose levels) ($p=0.01$), low percent of normal sperm morphology ($p=0.04$), high serum estradiol levels ($p=0.02$), low serum

LH levels ($p=0.02$), low ratio testosterone/estradiol ($p=0.006$) and high ratio testosterone/LH ($p=0.02$) were observed (Table 3).

Discussion

Organophosphate insecticides have been extensively used in agriculture in developing countries, with little protection for the communities and individuals thus exposed. Given the indisputable chronic exposure of vulnerable groups to organophosphate compounds, including pregnant women, the fetus and young children, the potential for widespread adverse effects is considerable [28]. As the use of these agents increases, acute and chronic exposure has become more common. As with other organophosphates, chlorpyrifos kills insects and other animals, including human beings, because of its toxicity to the nervous system [29]. Salem et al determined the effect of chronic treatment with two sublethal doses of Dimethoate (organo-phosphorus), the pesticide treatment resulted in a decline in body weight, libido, ejaculate volume, sperm concentration and semen initial fructose; and an increase in abnormal and dead sperm. The hazardous effect of these pesticides on semen quality continued during the post-treatment period, and was dose-dependent [30]. Therefore Rey et. al showed that quinalphos may exert a suppressive effect on the functional activity of accessory sex glands by decreasing testicular testosterone production following inhibition of pituitary gonadotrophins release [31]. Sarkar et al probed the effect of chronic sub-lethal doses (7-14 mg kg⁻¹ a day for 15 days) of quinalphos in rats. They found that quinalphos decreases fertility in adult male rats by affecting the pituitary gonadotrophins [32]. In other study Shigeyuki et al found that fenthion acted as antagonist of the androgenic activity of dihydrotestosterone [33].

We have previously demonstrated that several seminal parameters were affected in pesticide sprayer applicators from Majes, Peru. Seminal volume, sperm motility, normal sperm morphology, seminal zinc concentration and serum testosterone and LH were lower whereas seminal pH, time of liquefaction, percent of immature sperms and leukocyte concentration were higher in the exposed group. The multivariate analysis confirmed that seminal volume, seminal pH, sperm morphology, seminal zinc concentration and serum LH and T/LH ratio were related to exposure to pesticide and/or degree of toxicity of pesticides [11]. We found an increase of estradiol after regressing

time of exposure to pesticides, this result is different from those obtained by Hodgson and Rose where OPs showed a high irreversible inhibition activity of testosterone and estradiol metabolism by cytochrome P450 (CYP) 3A4, and by CYP3A4 and CYP1A2, respectively. All of these CYP inhibitions are believed to be due to the release of reactive sulfur during CYP-catalyzed oxidative desulfuration [34].

The present study was designed to demonstrate the association between parameters of seminal quality and the presence of ethylated or methylated OPs metabolites in urine of men. Data did not demonstrate the association described before comparing pesticide sprayer applicators with control subjects [11, 35-36]. In fact, men with elevated levels of OPs metabolites in urine showed only reduction of seminal volume and elevation of seminal pH. Multivariate analysis showed that the pesticide sprayer applicator occupation and time of exposure to pesticides were more related to variations in several seminal parameters than current measurements of OPs metabolites in urine.

Data suggest that current presence of OPs metabolites in urine is not an adequate marker to demonstrate the effect of long-term exposure to OPs pesticides. This has also been suggested in a previous study [12], since the rapid metabolism and excretion of OP and their metabolites may hinder an adequate exposure assessment. As observed in the multivariate analysis, variation in seminal quality is observed when occupational exposure to OP pesticides is included in the model. However, the fact that seminal volume and seminal pH were related to levels of OPs metabolites suggested that acute exposure to dialkylphosphates pesticides could be associated to alterations in sex accessory glands.

We have grouped subjects as having ethylated or methylated metabolites since other studies found that ethylated metabolites affect sperm chromatin but not other seminal parameters [12] whereas methylated metabolites not [37]

Seminal volume was reduced, whereas seminal pH was increased. This may be observed in situations in which sex accessory-gland function is altered. Seminal vesicles and prostate contribute 60% and 30% of the seminal volume, respectively [38,11]. In addition, seminal vesicles contribute with basic pH and prostate with acid pH. **Regarding to pH values, higher and lower values are observed in subjects with**

detectable levels of methylated and ethylated metabolites, respectively. These outcomes may be related to a random rather than a real biological effect of OPs. For instance, if volume is affected we must to observe also changes in values of zinc, fructose, and seminal pH.

Environmental exposure to OPs and adverse reproductive outcomes in men and women working on or living near farms are increasingly reported worldwide [39]. Experimental studies have demonstrated that OP pesticides, such as malathion, may induce arrest in spermatogenesis mice [40]. However, the occupational exposure [11] or the presence of either elevated levels of ethylated or methylated OPs metabolites in urine suggest that occupational OP exposure seems to affect post-testicular semen rather than exert a direct action on the testis. This is based on the fact that affected parameters such as seminal volume and seminal pH may be affected independently from the testis. It is possible that the action of OPs pesticides may occur at sex accessory glands level.

Seminal vesicles and prostate function are important for chromatin stability [41]. It is also known that OPs may affect DNA integrity [13, 12]. If OPs affect sex accessory gland functions. Then, this may affect sperm DNA [42]. Effect of OPs seems to be accumulative since single measurement was unable to demonstrate all reproductive effects observed when variable exposure to pesticides was included in the regression analysis.

In this study we found some non-exposed subjects with low levels of metabolites. These findings were similar to others where subjects considered non-exposed to OPs and without relation with agricultural activities [43]. In addition, Oglobline et. al measured urinary concentrations of dialkyl metabolites in 48 adults from Australia that were not occupationally exposed to organophosphates [44]. Several types of evidence suggest that agricultural pesticide use may be an important source of non-occupational pesticide exposure [45]. Recent epidemiologic findings support the concern that non-occupational exposure to agricultural pesticides can cause acute symptoms among populations living near sprayed fields in development countries [46]. The authors showed that one or more of the dialkyl phosphate metabolites was detected in all samples, and one sample contained all six metabolites in levels above the detection limit.

Conclusions

The study demonstrated that occupational exposure to OPs pesticides were more related to seminal quality alterations than a single measurement of urine OPs metabolites. Current measurement of OPs metabolites in urine may not be enough to determine all effects of OPs pesticide exposure on seminal quality as reported previously.

List of Abbreviations

IRMA, immunoradiometric assay; RIA, radioimmunoassay; FSH, follicle stimulating hormone; LH, luteinizing hormone; WHO, world health organization; IRB, Institutional Review Board; OPs, Organophosphates; T, Testosterone; E2, estradiol; DAP, dialkylphosphates; DMP, Dimethylphosphate; DMTP, Dimethylthiophosphate; DMDTP, Dimethyldithiophosphate; DEP, Diethylphosphate; DETP, Diethylthiophosphate; DEDTP, Diethyldithiophosphate.

Competing interests

The authors declare that they have no competing interests.

Authors' contributions

SY was the leader of the research she contributed to all phases in the research project from conception and design, the acquisition and analysis of data and the writing of the manuscript. **MG** contributed to the conception and the acquisition of data. **JR** contributed to the analysis of data and the revising of the manuscript for intellectual content. **CG** contributed to the acquisition of data. **GGR** contributed to the design, the analysis of data and the revising of the manuscript for intellectual content. All authors have given their final approval of the version to be published.

Acknowledgements

This study was supported by a Fogarty International Center Grant to Emory University, International Training and Research Program In Environmental and Occupational Health. Grant # 5-D43TW005746-04.

References

1. Lemaire G, Terouanne B, Mauvais P, Michel S, Rahmani R: **Effect of organochlorine pesticides on human androgen receptor activation in vitro.** *Toxicol Appl Pharmacol* 2004, **196**: 235-246.
2. Yucra S, Steenland K, Chung A, Choque F, Gonzales GF: **Dialkyl phosphate metabolites of organophosphorus in applicators of agricultural pesticides in Majes Arequipa (Peru),** *J Occup Med Toxicol* 2006a, **1**: 27.
3. Cataño HC, Carranza E, Huamani C, Hernández AF: **Plasma Cholinesterase Levels and Health Symptoms in Peruvian Farm Workers Exposed to Organophosphate Pesticides.** *Arch Environ Contam Toxicol.* 2008, **55**:153-9.
4. Astroff AB, Freshwater KJ, Eigenberg DA: **Comparative organophosphate-induced effects observed in adult and neonatal Sprague-Dawley rats during the conduct of multigeneration toxicity studies.** *Reprod Toxicol* 1998, **12**: 619-645.
5. Padungtod C, Savitz DA, Overstreet JW, Christiani DC, Ryan LM, Xu X: **Occupational pesticide exposure and semen quality among Chinese workers,** *J Occup Environ Med* 2000, **42**: 982-992.
6. Swan SH, Kruse RL, Liu F, Bar DB, Brobins EZ, Redmon JB, Wang C, Brazil C, Overstreet JW: **Semen quality in relation to biomarkers of pesticide exposure.** *Environ Health Perspect* 2003, **111**: 1478-1484.
7. Marmol-Maneiro L, Fernandez-D'Pool J, Sanchez BJ, Sirit Y: **Seminal profile in workers exposed to cholinesterase inhibitor insecticides** *Invest Clin* 2003, **44**: 105-117.
8. Eskenazi B, Marks AR, Braman A, Harley K, Barr DB, Johnson C, Morga N, Jewell NP: **Organophosphate pesticide exposure and neurodevelopment in young Mexican-American children.** *Environ Health Perspect* 2007, **115**: 792-798
9. Sultatos LG: **Mammalian toxicology of organophosphorous pesticides.** *J Toxicol Environ Health* 1994, **43**: 271-289.
10. Reuber MD: **Carcinogenicity and toxicity of malathion and malaoxon.** *Environ Res* 1985, **37**: 119-153.
11. Yucra S, Rubio J, Gasco M, Gonzales C, Steenland K, Gonzales GF: **Semen quality and reproductive sex hormone levels in Peruvian pesticide sprayers.** *Int J Occup Environ Health* 2006, **12**: 355-361.
12. Sanchez-Peña LC, Reves BE, Lopez-Carrillo L, Recie R, Moran-Martinez J, Cebrian ME, Quintanilla-Vega B: **Organophosphorous pesticide exposure alters**

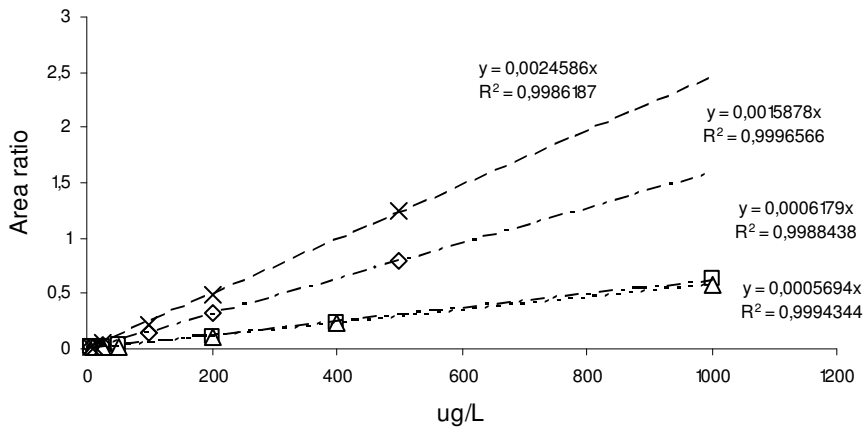
- sperm chromatin structure in Mexican agricultural workers.** *Toxicol Appl Pharmacol* 2004, **196**: 108-113.
13. Recio R, Robbins WA, Borja-Aburto V, Moran-Martinez J, Froines JR, Hernandez RM, Cebrian ME: **Organophosphorous pesticide exposure increases the frequency of sperm sex null aneuploidy.** *Environ Health Perspect* 1985, **109**: 1237-1240.
14. Larsen SB, Giwercman A, Spano M, Bonde JP: **A longitudinal study of semen quality in pesticide spraying Danish farmers. The ASCLEPIOS Study Group.** *Reprod Toxicol* 1998, **12**: 581-589.
15. Larsen SB, Spano M, Giwercman A, Bonde JP: **Semen quality and sex hormones among organic and traditional Danish farmers. ASCLEPIOS Study Group.** *J Occup Environ Med* 1999, **56**:139-144.
16. Recio R, Ocampo-Gomez G, Moran-Martinez J, Borja-Aburto V, Lopez-Cervante M, Uribe M, Torres-Sanchez L, Cebrian ME: **Pesticide exposure alters folliclestimulating hormone levels in Mexican agricultural workers.** *Environ Health Perspect* 2005, **113**: 1160-1163.
17. Straube E, Straube W, Kruger E, Bradatsch M, Jacob-Meisel M, Rose HJ: **Disruption of male sex hormone with regard to pesticides: pathophysiological and regulatory aspect.** *Toxicol Lett* 1999, **107**: 225-231.
18. Padungtod C, Lasley BL, Christiani DC, Ryan LM, Xu X: **Reproductive hormone profile among pesticide factory workers.** *J Occup Environ Med* 1998, **40**: 1038-1047.
19. Tamura H, Maness SC, Reischmann K, Dorman DC, Gray LE, Gaido KW: **Androgen receptor antagonism by the organophosphate insecticide Fenitrothion.** *Toxicol Sci* 2001, **60**: 56-62.
20. Kang HG, Jeong SH, Cho JH, Kim DG, Park JM, Cho MH: **Chlorpyrifos-methyl shows anti-androgenic activity without estrogenic activity in rats.** *Toxicology* 1999, **1**: 219-230.
21. Gonzales GF: **Andrología: fertilidad e infertilidad**, Edited by Instituto de Investigaciones de la Altura. Lima-Peru; 1992: 225.
22. World Health Organization: **WHO Laboratory Manual for the Examination of Human Semen and Semen-Cervical Mucus Interaction.** 4th edition. Edited by Cambridge University Press. Cambridge; 1999.
23. Gonzales GF: **Basal serum testosterone as an indicator of response to clomiphene treatment in human epididymis, seminal vesicles and prostate.** *Andrologia* 2002, **34**: 308-316.

24. Gonzales GF, Villena A: **True corrected seminal fructose level: a better marker of the function of seminal vesicles in infertile men.** *Int J Androl* 2001, **24**: 255-260.
25. Gonzales GF. **Function of seminal vesicles and their role on male fertility.** *Asian J Androl* 2001, **3**: 251-258
26. **The bulletin of Pacific Toxicology Laboratories: Human toxicological exposure-organophosphate pesticide.**
[<http://www.pactox.com/library/article.php?articleID=16>]
27. Curl CL, Fenske RA, Elgethun K: **Organophosphorus Pesticide of Urban and suburban Preschool Children with organic and conventional Diets.** *Environ Health Perspect* 2003, **111**:377-82.
28. De Silva HJ, Samarawickrema NA, Wickremasinghe AR. **Toxicity due to organophosphorus compounds: what about chronic exposure?** *Trans R Soc Trop Med Hyg.* 2006, **100**:803-6.
29. Sebe A, Satar S, Alpay R, Kozaci N, Hilal A. **Organophosphate poisoning associated with fetal death: a case study.** *Mt Sinai J Med.* 2005,**72**:354-6
30. Salem MH, Abo-Elezz Z, Abd-Allah GA, Hassan GA, Shaker N. **Effect of organophosphorus (dimethoate) and pyrethroid (deltamethrin) pesticides on semen characteristics in rabbits.** *J Environ Sci Health B.* 1988, **23**:279-90.
31. Ray A, Chatterjee S, Ghosh S, Kabir SN, Pakrashi A, Deb C. **Suppressive effect of quinalphos on the activity of accessory sex glands and plasma concentrations of gonadotrophins and testosterone in rats.** *Arch Environ Contam Toxicol.* 1991, **21**:383-7
32. Sarkar R, Mohanakumar KP, Chowdhury M. **Effects of an organophosphate pesticide, quinalphos, on the hypothalamo-pituitary-gonadal axis in adult male rats.** *J Reprod Fertil* 2000, **118**:29-38
33. Shigeyuki K, Tomoharu S, Shigeru O, Nariaki F. **Antiandrogenic activity and metabolism in the organophosphorus pesticide fenthion and related compounds.** *Environmental Health Perspectives* 2003, **111**:503-8
34. Hodgson E, Rose RL. **Human metabolic interactions of environmental chemicals.** *J Biochem Mol Toxicol.* 2007, **21**:182-6.
35. Kamijima M, Hibi H, Gotoh M, Taki K, Taki K, Saito I, Wang H, Itohara S, Yamada T, Ichihara T, Shibata E, Nakajima T, Takeuchi Y: **A survey of semen indices in insecticide sprayers.** *J Occup Health* 2004, **46**: 109-118.

36. Swan SH: **Semen quality in fertile US men in relation to geographical area and pesticide exposure.** *Int J Androl* 2006, **29**: 62-68.
37. **Recio R, Robbins WA, Borja-Aburto V, Morán-Martínez J, Froines JR, Hernández RM, Cebrián ME.** Organophosphorous pesticide exposure increases the frequency of sperm sex null aneuploidy. *Environ Health Perspect.* 2001, **109**(12):1237-40
38. Gonzales GF. **Basal serum testosterone as an indicator of response to clomiphene treatment in human epididymis, seminal vesicles and prostate.** *Andrologia.* 2002, **34**:308-16
39. Peiris-John RJ, Wickremasinghe R. **Impact of low-level exposure to organophosphates on human reproduction and survival.** *Trans R Soc Trop Med Hyg.* 2008, **102**:239-45.
40. Bustos-Obregon E, Yucra S, Gonzales GF: **Lepidium meyenii (Maca) reduces spermatogenic damage induced by a single dose of malathion in mice.** *Asian J Androl* 2005, **7**: 71-76.
41. Gonzales GF: **Function of seminal vesicles and their role on male fertility** *Asian J Androl* 2001, **3**: 251-258.
42. García J, Noriega-Hoces L, Gonzales GF. **Sperm chromatin stability and its relationship with fertilization rate after intracytoplasmic sperm injection (ICSI) in an assisted reproduction program.** *J Assist Reprod Genet.* 2007, **24**:587-93.
43. Bouvier G, Seta N, Vigouroux-Villard A, Blanchard O, Momas I. **Insecticide urinary metabolites in nonoccupationally exposed populations.** *J Toxicol Environ Health B Crit Rev.* 2005, **8**:485-512. Review
44. Oglobline AN, Elimelakh H, Tattam B, Geyer R, O'Donnell GE, Holder G. **Negative ion chemical ionization GC/MS-MS analysis of dialkylphosphate metabolites of organophosphate pesticides in urine of non-occupationally exposed subjects.** *Analyst* 2001, **126**:1037-1041
45. Plimmer JR. **Dissipation of pesticides in the environment.** In "Fate of Pesticides and chemicals in the Environment" (J.L. Schnoor, Ed.), 1991. pp 79-91. Wiley, New York.
46. Ames RG, Howd RA, Doherty L. **Community exposure to a paraquat drift.** *Arch Environ Health.* 1993, **48**:47-52.

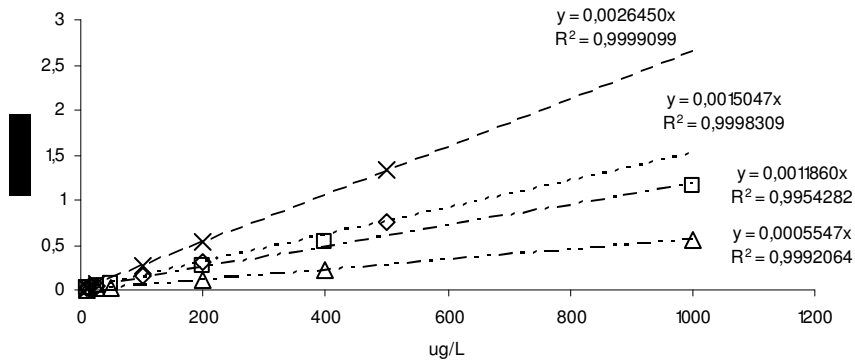
Figure 1. Lineary of calibration curve of methylated (A) and ethylated (B) compounds.

A



Data represents the calibration curve (y: area ratio and R²: correlation) of methylated compounds (x : DMTP2, ◇: DMTP1, □:DMP, △: DMDTP).

B



Data represents the calibration curve of (y: area ratio and R²:correlation) of ethylated compounds: x : DETP2, ◇: DETP1, □:DEP, △: DEDTP

Table 1. Chi-square test to evaluate the presence/absence of OPs metabolites in men from Majes, Arequipa.

Dependent variable	Non Exposed n/N (%)	Exposed n/N (%)	p	No Exposed GM((DS(GM)))	Exposed GM((DS(GM)))	p
DEP	5/31 (16.1)	8/31 (25.8)	0.53	2.99(2.06)	3.75 (8.17)	0.31
DEDTP	9/31 (29.0)	18/31 (58.1)	0.04	10.24(54.46)	25.33 (78.60)	0.01
DETP	2/31 (6.5)	10/31 (32.3)	0.02	2.66(1.02)	3.85 (7.15)	0.10
DMP	23/31 (74.2)	26/31 (86.9)	0.53	9.57(19.47)	14.22 (42.42)	0.14
DMDTP	5/31 (16.1)	1/31 (3.2)	0.19	56.37(6.65)	5.3 (4.53)	0.10
DMTP	18/31 (58.1)	25/31 (80.6)	0.09	9.69(68.72)	22.92 (48.55)	0.02

n = number of subjects with the metabolite in urine. **N**=number of subjects in each group (exposed or non exposed subjects). **P**: level of significance after chi square test.

LOD (Limit of detection) for: DMP, DMTP, DEP, DETP 5 ug/l. DMDTP, DEDTP 10 ug/l.

Table 2. Regression coefficients and probability values to determine the association between seminal parameters and exposure to pesticides and time of exposure to pesticides in men from Majes, Arequipa. Analyses were performed after controlling for urine levels of ethylated OPs metabolites, respectively.

	Exposure to pesticides ($\beta \pm \text{SEM}$)	P	Time of exposure to pesticides ($\beta \pm \text{SEM}$)	P
Time of liquefaction minutes	-1.53 \pm 1.74	0.385	0.11 \pm 0.31	0.710
Seminal Volume mL	-0.72 \pm 0.31	0.025	-0.09 \pm 0.06	0.148
pH	0.29 \pm 0.09	0.002	0.03 \pm 0.02	0.068
Log Corrected fructose	-0.17 \pm 0.09	0.058	-0.04 \pm 0.01	0.008
Log Seminal zinc	-0.05 \pm 0.09	0.578	-0.02 \pm 0.02	0.262
Log sperms/mL	-0.14 \pm 0.12	0.250	-0.02 \pm 0.02	0.443
Log sperms/ejaculum	-0.24 \pm 0.15	0.101	-0.04 \pm 0.03	0.153
Sperm Vitality %	2.07 \pm 1.79	0.254	-0.21 \pm 0.32	0.515
Log motility grade 3 (%)	-0.02 \pm 0.09	0.784	-0.02 \pm 0.02	0.143
Log motility grade 3 + 2 (%)	-0.05 \pm 0.05	0.324	0.00 \pm 0.00	0.167
Sperm with normal morphology (%)	-7.65 \pm 2.16	0.001	-0.02 \pm 0.01	0.133
Immature sperm (%)	1.89 \pm 1.48	0.206	-1.04 \pm 0.42	0.016
Log Seminal leucocytes	0.59 \pm 0.09	0.000	0.17 \pm 0.26	0.516
Serum testosterone (ng/mL)	-0.62 \pm 0.41	0.134	0.02 \pm 0.02	0.369
Log Serum estradiol (pg/ml)	0.06 \pm 0.07	0.434	-0.10 \pm 0.07	0.168
Log Serum FSH (mIU/mL)	0.17 \pm 0.18	0.345	0.03 \pm 0.01	0.026
Log Serum LH (mIU/mL)	-0.37 \pm 0.21	0.074	0.01 \pm 0.03	0.725
Log T/E2 (ng/pg)	-0.11 \pm 0.07	0.118	-0.04 \pm 0.01	0.006
Log T/LH (ng/mIU)	0.32 \pm 0.20	0.126	0.009 \pm 0.03	0.010

Regressions adjusted for age and alcohol consumption. Exposure to pesticide: 0= non exposed; 1= exposed. Ethylated metabolites of OPs: 0=non detectable; 1= over limit of detection. Time of exposure to pesticides (continuous variable). $\beta \pm \text{SEM}$: Coefficient of regression \pm Standard error of the mean. Data with non parametric behavior were log-transformed in order to performed linear regression analyses.

Table 3. Regression coefficients and probability values to determine the association between seminal parameters and exposure to pesticides and time of exposure to pesticides in men from Majes, Arequipa. Analyses were performed after controlling for urine levels of methylated OPs metabolites, respectively.

	Exposure to pesticides ($\beta \pm \text{SEM}$)	P	Time of exposure to pesticides ($\beta \pm \text{SEM}$)	P
Time of liquefaction minutes	-1.15 \pm 1.73	0.509	0.17 \pm 0.30	0.568
Seminal Volume mL	-0.76 \pm 0.32	0.020	-0.09 \pm 0.06	0.142
pH	0.24 \pm 0.09	0.011	0.03 \pm 0.02	0.083
Log Corrected fructose	-0.17 \pm 0.09	0.049	-0.04 \pm 0.02	0.006
Log Seminal zinc	-0.05 \pm 0.09	0.607	-0.03 \pm 0.02	0.182
Log sperms/mL	-0.10 \pm 0.12	0.430	-0.01 \pm 0.02	0.512
Log sperms/ejaculum	-0.20 \pm 0.12	0.171	-0.04 \pm 0.03	0.123
Sperm Vitality %	2.20 \pm 1.79	0.225	-0.21 \pm 0.32	0.517
Log motility grade 3 (%)	-0.03 \pm 0.09	0.737	-0.02 \pm 0.01	0.178
Log motility grade 3 + 2 (%)	-0.05 \pm 0.05	0.380	-0.01 \pm 0.01	0.144
Sperm with normal morphology (%)	-7.03 \pm 2.14	0.002	-0.86 \pm 0.39	0.032
Immature sperm (%)	1.12 \pm 1.51	0.462	0.14 \pm 0.27	0.613
Log Seminal leucocytes	0.56 \pm 0.09	0.000	0.02 \pm 0.02	0.389
Serum testosterone (ng/mL)	-0.67 \pm 0.41	0.109	-0.10 \pm 0.07	0.193
Log Serum estradiol (pg/ml)	0.05 \pm 0.07	0.451	0.03 \pm 0.01	0.026
Log Serum FSH (mIU/mL)	-0.13 \pm 0.18	0.460	0.01 \pm 0.03	0.768
Log Serum LH (mIU/mL)	-0.40 \pm 0.20	0.053	-0.11 \pm 0.04	0.006
Log T/E2 (ng/pg)	-0.12 \pm 0.07	0.113	-0.04 \pm 0.01	0.007
Log T/LH (ng/mIU)	0.34 \pm 0.20	0.097	0.10 \pm 0.04	0.008

Regressions adjusted for age and alcohol consumption. Exposure to pesticide: 0= non exposed; 1= exposed. Ethylated metabolites of OPs: 0=non detectable; 1= over limit of detection. Time of exposure to pesticides (continuous variable). $\beta \pm \text{SEM}$: Coefficient of regression \pm Standard error of the mean. Data with non parametric behavior were log-transformed in order to performed linear regression analyses.